

WAAS CH 82400 W19A	APP CRS 190°	Rwy Idg 5037 TDZE 19 Apt Elev 22
--	------------------------	---

RNAV (GPS) RWY 19

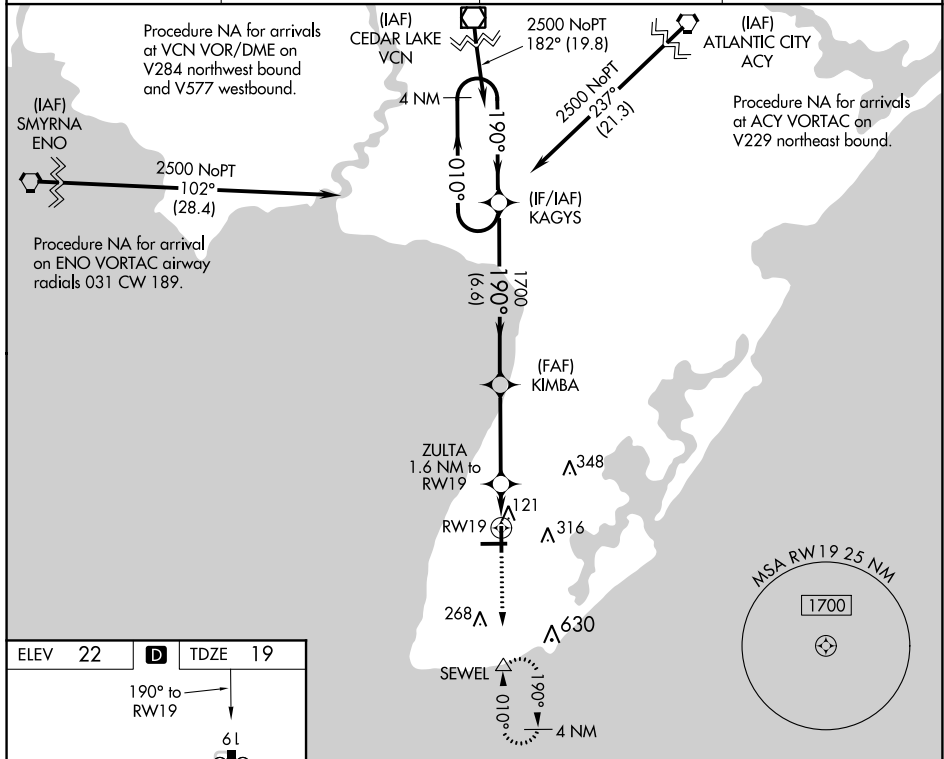
CAPE MAY COUNTY (WWD)

RNP APCH.

T For uncompensated Baro-VNAV systems, LNAV/VNAV NA below -8°C or above 54°C.
A Circling NA for Cats C and D NE of Rwy 19 and 28. Rwy 19 helicopter visibility reduction below 1 SM NA. Circling Rwy 1 NA at night.

MISSED APPROACH: Climb to 2500 direct SEWEL and hold, continue climb-in-hold to 2500.

AWOS-3PT 118.275	ATLANTIC CITY APP CON 124.6 327.125	CLNC DEL 121.7	UNICOM 122.7 (CTAF) 0
----------------------------	---	--------------------------	---------------------------------

[illegible]

2500 ↑	SEWEL △	<p>*NNAV only.</p> <p>RW19</p> <p>ZULTA 1.6 NM to RW19</p> <p>KIMBA 1700</p> <p>KAGYS</p> <p>4 NM Holding Pattern</p> <p>010° →</p> <p>← 190°</p> <p>2500</p> <p>GP 3.00° TCH 40</p> <p>1.6</p> <p>3.6 NM</p> <p>6.6 NM</p>			
CATEGORY	A	B	C	D	
LPV DA	269-1 250 (300-1)				
INAV/ VNAV DA	392-1¼ 373 (400-1¼)				
INAV MDA	380-1 361 (400-1)				
C CIRCLING	480-1 458 (500-1)	620-1 598 (600-1)	620-1½ 598 (600-1½)	980-3 958 (1000-3)	