

WAAS CH 45519 W31B	APP CRS 314°	Rwy Idg 8486 TDZE 13 Apt Elev 13
--	------------------------	---

RNAV (GPS) Y RWY 31R

JOHN F KENNEDY INTL (JFK)

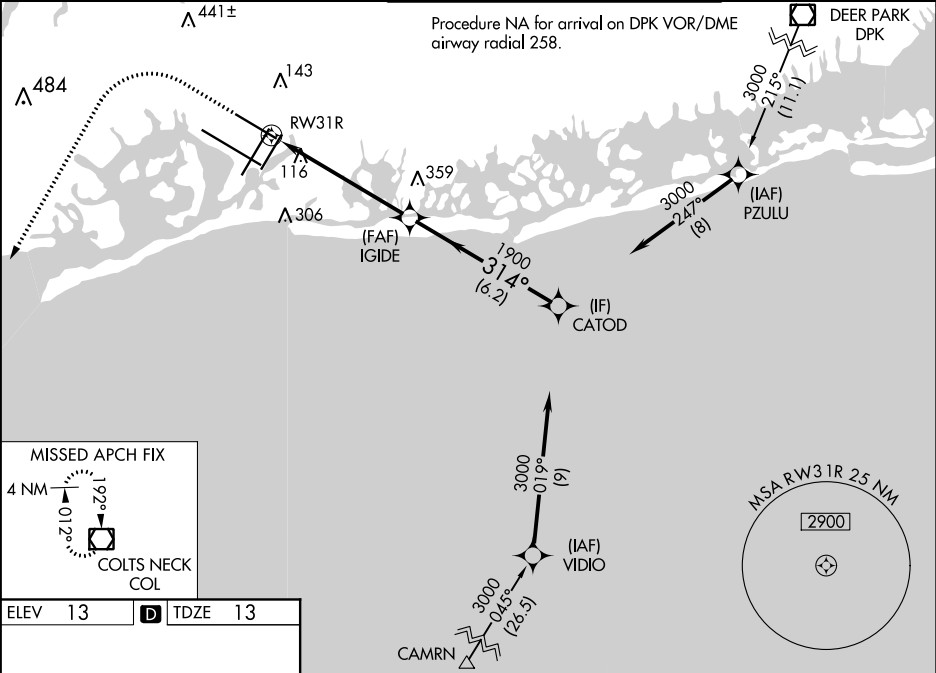
RNP APCH.

Simultaneous approach authorized. For uncompensated Baro-VNAV systems, LNAV/VNAV NA below -12°C or above 54°C. Minimum altitude at CATOD 2000 when authorized by ATC. Use of FD or AP required during simultaneous operations. LNAV procedure NA during simultaneous operations. For inop ALS, increase LNAV/VNAV all Cats visibility to RVR 5500.

MALSR

MISSED APPROACH:
Climb to 1800 then climbing left turn to 4000 direct COL VOR/DME and hold.

D-ATIS (ARR/DEP) (ARR-NE) (ARR-SW)	NEW YORK APP CON	KENNEDY TOWER	GND CON	CLNC DEL	CPDLC
128.725 117.7 115.4	128.125 269.0	Rwys 4R/22L and 13L/31R 119.1 281.55 Rwys 4L/22R and 13R/31L 123.9 281.55	121.9 348.6	135.05 348.6	



1800 4000 COL

VGSI and RNAV glidepath not coincident (VGSI Angle 3.00/TCH 54).

CATOD

*LNAV only.

*1.2 NM to RW31R

RW31R

1.2 NM 4.6 NM 6.2 NM

1900 314° 3000

GP 3.00° TCH 49

CATEGORY	A	B	C	D
LPV DA	213/18 200 (200-½)			
LNAV/ VNAV DA	369/35 356 (400-¾)			
LNAV MDA	460/24 447 (500-½)		460/45 447 (500-¾)	
CIRCLING	640-1 627 (700-1)		680-1¾ 667 (700-1¾) 680-2 667 (700-2)	

REIL Rwy 4L
RLS Rwys 13L and 13R
HIRL all Rwys
TDZ/CL Rwys 4L, 4R, 13L, 22L and 31R

314° to RW31R