

VOR/DME JFK
115.9
Chan **106**

APP CRS
052°

Rwy Idg **11010**
TDZE **13**
Apt Elev **13**

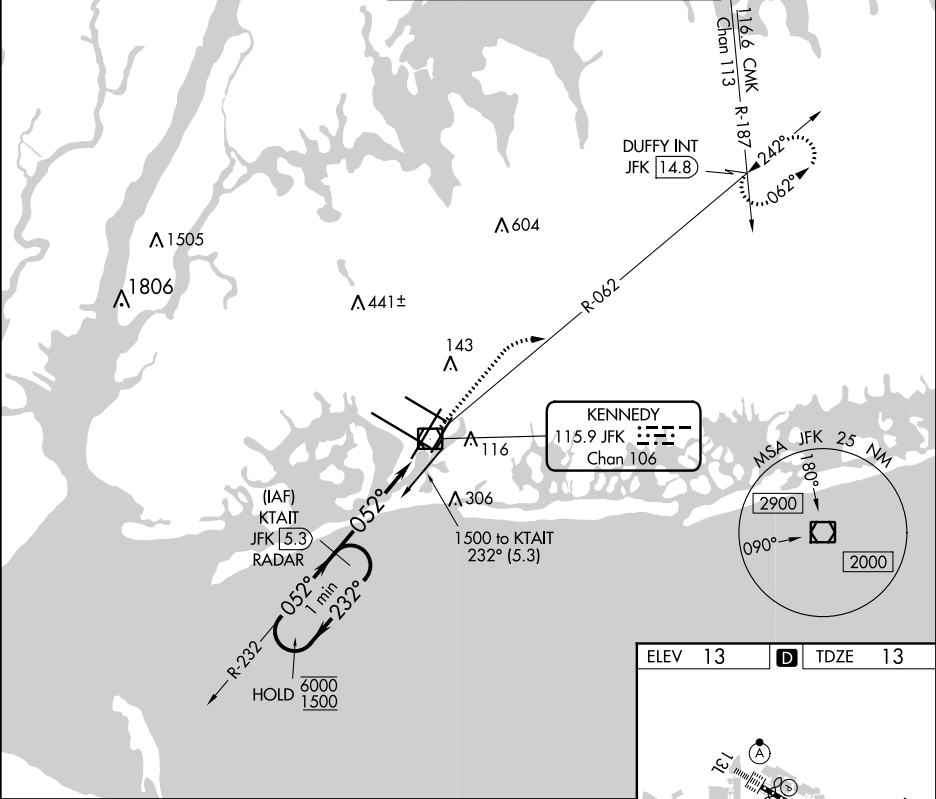
VOR RWY 4L

JOHN F KENNEDY INTL (JFK)

DME or RADAR required for procedure entry.

MISSED APPROACH: Climb to 2000 then climbing right turn to 3000 on JFK VOR/DME R-062 to DUFFY INT/JFK 14.8 DME and hold.

D-ATIS (ARR/DEP)(ARR-NE) (ARR-SW)	NEW YORK APP CON	KENNEDY TOWER Rwys 4R/22L and 13L/31R Rwys 4L/22R and 13R/31L	GND CON	CLNC DEL	CPDLC
128.725 117.7 115.4	128.125 269.0	119.1 281.55 123.9 281.55	121.9 348.6	135.05 348.6	



One Minute Holding Pattern

KTAIT JFK 5.3 RADAR

2000 3000 DUFFY INT

6000 1500 232° 052°

VGSI and descent angles not coincident (VGSI Angle 3.00/TCH 75).

052° 3.02° TCH 57 JFK 2.1 JFK 0.8

3.3 NM 1.2

CATEGORY	A	B	C	D
S-4L	480/55	467 (500-1)	480-1 ³ / ₈	467 (500-1 ³ / ₈)
CIRCLING	640-1	627 (700-1)	680-1 ³ / ₄ 667 (700-1 ³ / ₄)	680-2 667 (700-2)

FAF to MAP 4.5 NM

Knots 60 90 120 150 180
Min:Sec 4:30 3:00 2:15 1:48 1:30