


LOC I- <b>AG</b>	APP CRS	Rwy ldg	<b>9129</b>
<b>110.1</b>	<b>280°</b>	TDZE	<b>588</b>
		Apt Elev	<b>592</b>

ILS Z or LOC Z RWY 28R

NIAGARA FALLS INTL (IAG)

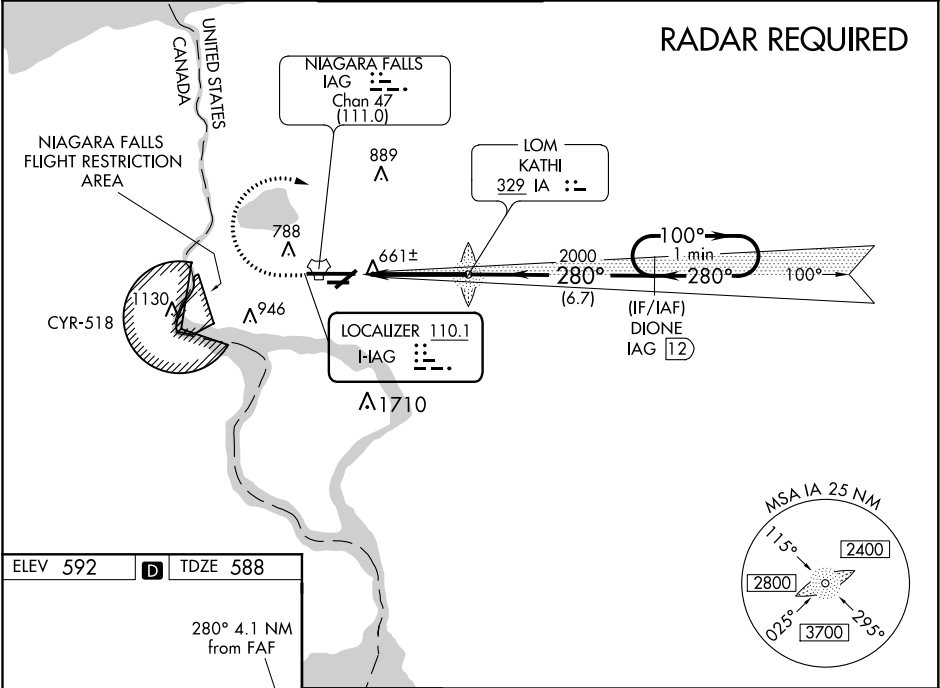
⚠ When local altimeter setting not received, use Buffalo Niagara Intl altimeter setting and increase all DA 51 feet and all MDA 60 feet; increase Circling Cat C and D visibility ¼ SM. For inop MALS, increase S-ILS 28R all Cats visibility to RVR 5000. For inop MALS when using Buffalo Niagara Intl altimeter setting, increase S-ILS 28R all Cats visibility to RVR 4500, S-LOC 28R Cats A/B visibility to RVR 5000, and S-LOC 28R Cats C/D visibility to RVR 6000. DME required. Rwy 28R helicopter visibility reduction below ¾ SM NA. Rwy 6, 10R, 24, 28L, helicopter visibility reduction below 1 SM NA. Circling Rwy 6, 10R, 24, 28L NA at night.

MALS



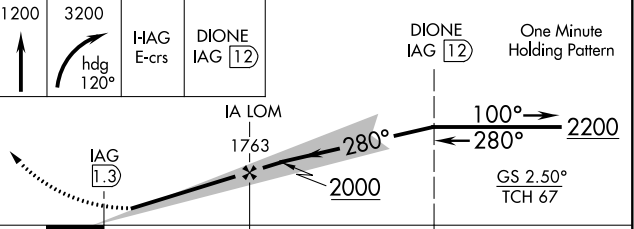
MISSED APPROACH: Climb to 1200 then climbing right turn to 3200 on heading 120° and H-AG E course to DIONE/IAG 12 DME and hold.

ATIS	BUFFALO APP CON	NIAGARA TOWER★	GND CON	CLNC DEL	UNICOM
<b>120.8 269.4</b>	<b>126.5 317.6</b>	<b>118.5 (CTAF) 0 349.0</b>	<b>125.3 275.8</b>	<b>119.25 251.1</b>	<b>122.95</b>



ELEV 592 D TDZE 588

280° 4.1 NM from FAF



1200	3200	H-AG E-crsc	DIONE IAG 12	DIONE IAG 12	One Minute Holding Pattern
		IA LOM		100°→ 2200	
		1763		GS 2.50° TCH 67	
		2000			
		4.1 NM		6.7 NM	
CATEGORY	A	B	C	D	
S-ILS 28R	838/40 250 (300-¾)				
S-LOC 28R	920/40 332 (400-¾)				
CIRCLING	1100-1	508 (600-1)	1280-2 688 (700-2)	1280-2¼ 688 (700-2¼)	

TDZ/CL Rwy 28R

REIL Rwys 6, 10R, 24, and 28L

HIRL Rwy 10L-28R

MIRL Rwys 6-24 and 10R-28L