

LOC/DME I-HPN	APP CRS	Rwy Idg
109.7	163°	6549
Chan 34		TDZE 439
		Apt Elev 439

ILS or LOC RWY 16

WESTCHESTER COUNTY (HPN)

▼

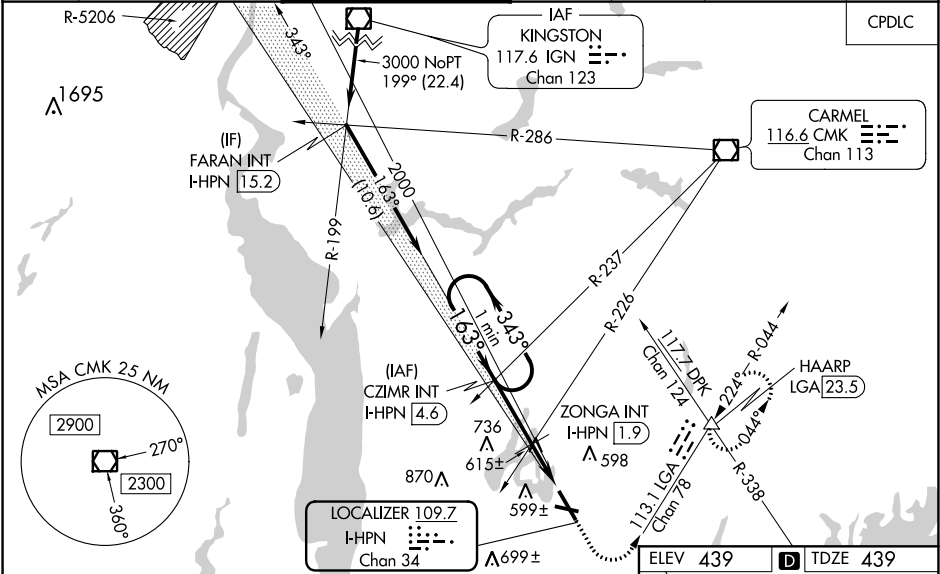
▲

Circling Rwy 11, 29 NA at night.
For inop ALS, increase S-LOC 16
Cats C/D visibility to 1½ SM and
ZONGA FIX minimums S-LOC 16
Cats C/D visibility to 1¾ SM.

MALSR

MISSED APPROACH: Climb to 1000
then climbing left turn to 3000 on heading
150° and LGA VOR/DME R-044 to
HAARP INT/LGA 23.5 DME and hold,
continue climb-in-hold to 3000.

D-ATIS	NEW YORK APP CON	WESTCHESTER TOWER ★	GND CON	CLNC DEL	CLNC DEL	UNICOM
133.8	120.8 126.4 257.65	118.575 (CTAF) 0 284.65	121.825	127.25	126.4 (when twr closed)	122.95



One Minute Holding Pattern

GS 3.00° TCH 55

CZIMR INT I-HPN 4.6

1000

3000

LGA R-044

HAARP

163° 4.7 NM from FAF

91

450

4451 X 150

TWR 525

29

34

0.95 UP

2100

343°

163°

2000

2000

1100

2.7 NM

0.6

1.4 NM

I-HPN DME ANTENNA

*LOC only.

I-HPN 1.3

I-HPN 0.1

ZONGA INT I-HPN 1.9

*I-HPN 1.3

*I-HPN 0.1

CATEGORY	A	B	C	D
S-ILS 16		639/18	200 (200-½)	
S-LOC 16	1100/24	661 (700-½)	1100-1½	661 (700-½)
CIRCLING	1100-1	661 (700-1)	1100-1¾ 661 (700-1¾)	1200-2½ 761 (800-2½)
ZONGA FIX MINIMUMS (DUAL VOR RECEIVERS OR DME REQUIRED)				
S-LOC 16	940/24	501 (600-½)	940/55	501 (600-1)
CIRCLING	980-1	541 (600-1)	1080-1¾ 641 (700-1¾)	1200-2½ 761 (800-2½)

REIL Rwy 11 and 34

HRL Rwy 16-34

MIRL Rwy 11-29

TDZ/CL Rwy 16

FAF to MAP 4.7 NM

Knots	60	90	120	150	180
Min:Sec	4:42	3:08	2:21	1:53	1:34