

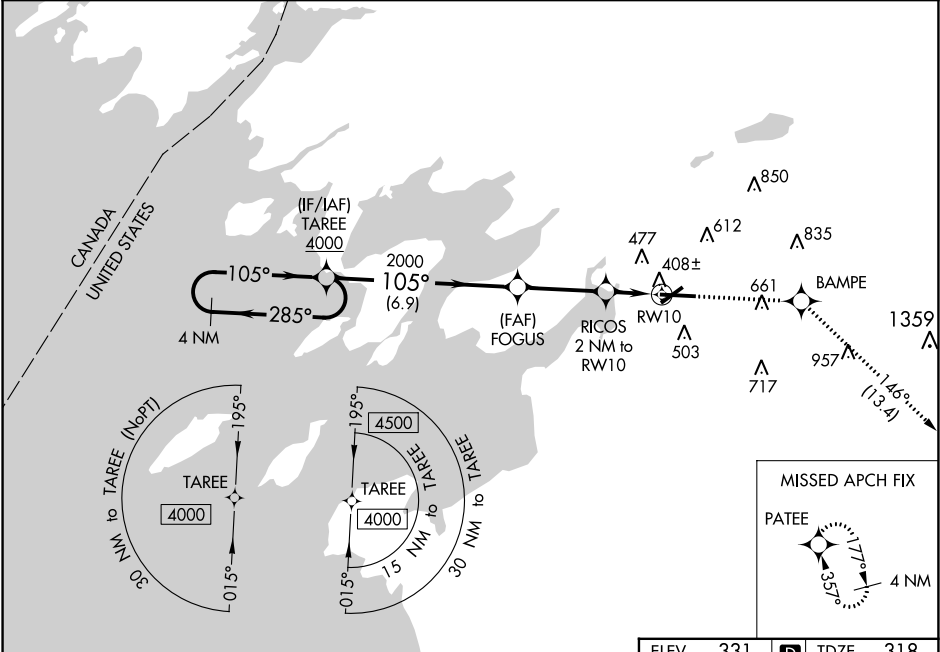
WAAS CH 53522 W10A	APP CRS 105°	Rwy Idg TDZE Apt Elev	7001 318 331
--	------------------------	-----------------------------	---

RNAV (GPS) RWY 10

WATERTOWN INTL (ART)

RNP APCH.	MISSED APPROACH: Climb to 3600 direct BAMPE and on track 146° to PATEE and hold.
<div><div>▲</div><div>For uncompensated Baro-VNAV systems, LNAV/VNAV NA below -20°C or above 54°C. Rwy 10 helicopter visibility reduction below ¾ SM NA.</div><div>❄️ -37°C</div></div>	

ASOS 132.325	GTB ATIS 119.525	WHEELER-SACK APP CON 124.875 257.6	CLNC DEL 120.8	UNICOM 123.0 (CTAF) 0
------------------------	----------------------------	--	--------------------------	---------------------------------



4 NM Holding Pattern		TAREE 4000		3600	BAMPE	tr 146°	PATEE
4000		FOGUS		*LNAV only.			
GP 3.00° TCH 47		2000		RICOS 2 NM to RW10			
2000		*980		*1 NM to RW10			
6.9 NM		3.2 NM		1 NM			
1 NM		1 NM					
CATEGORY	A	B	C	D			
LPV DA	568-¾		250 (300-¾)				
LNAV/VNAV DA	578-¾		260 (300-¾)				
LNAV MDA	660-1		342 (400-1)				
CIRCLING	960-1	629 (700-1)	980-1¾ 649 (700-1¾)	1080-2½ 749 (800-2½)			

REIL Rwy 28 0

HIRL Rwy 7-25 0

MIRL Rwy 10-28 0