

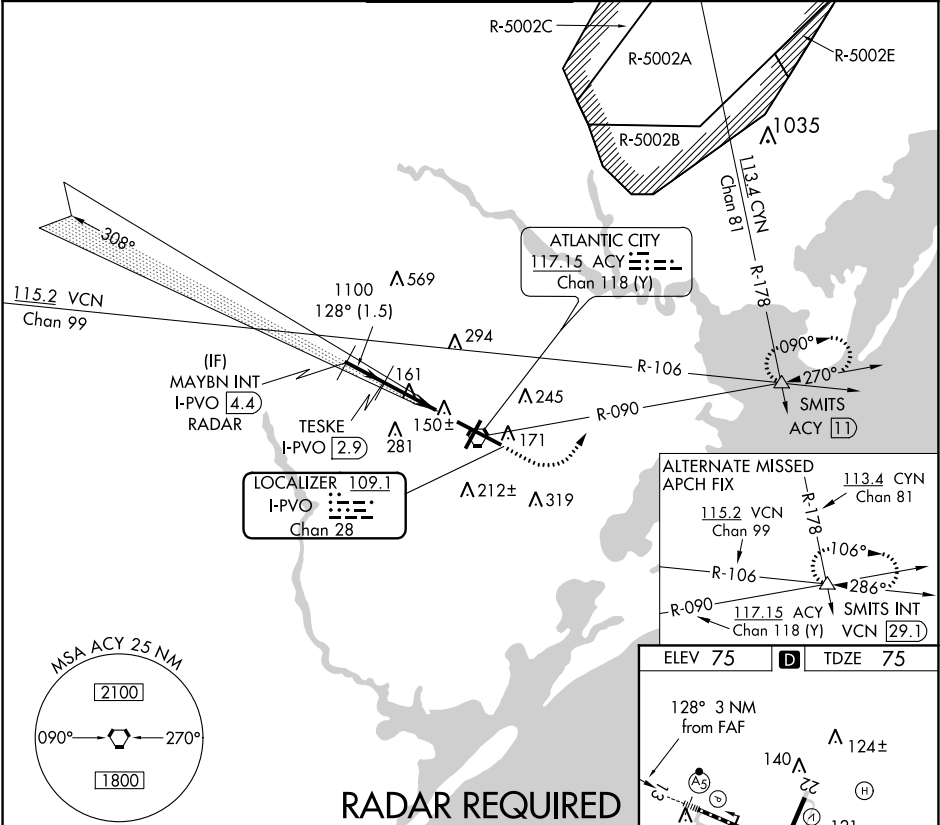
| | | | |
|---------------|---------|----------|-------|
| LOC/DME I-PVO | APP CRS | Rwy Idg | 10000 |
| 109.1 | 128° | TDZE | 75 |
| Chan 28 | | Apt Elev | 75 |

COPTER ILS or LOC/DME RWY 13

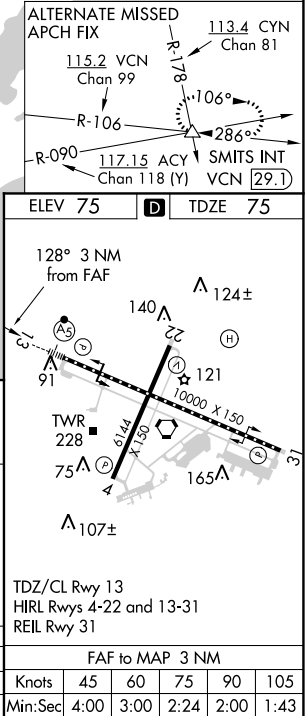
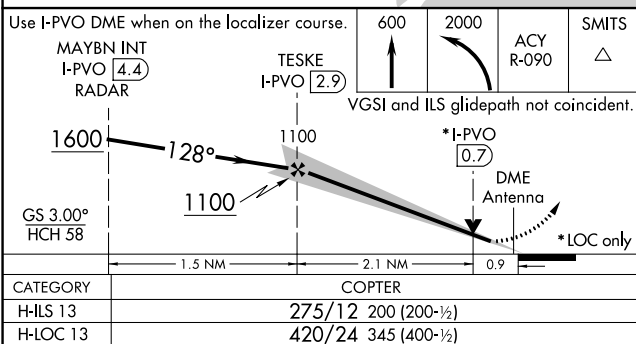
ATLANTIC CITY INTL (ACY)

| | | |
|--|--|---|
| | | MISSED APPROACH: Climb to 600 then climbing left turn to 2000 via ACY R-090 to SMITS INT/ACY 11 DME and hold. |
|--|--|---|

| | | | | |
|----------------|-----------------------|---------------------|-------------|----------------|
| ATIS | ATLANTIC CITY APP CON | ATLANTIC CITY TOWER | GND CON | CLNC DEL |
| 125.725 316.15 | 124.6 327.125 | 120.3 239.0 | 121.9 284.6 | 127.85 353.775 |



RADAR REQUIRED



COPTER ILS or LOC/DME RWY 13