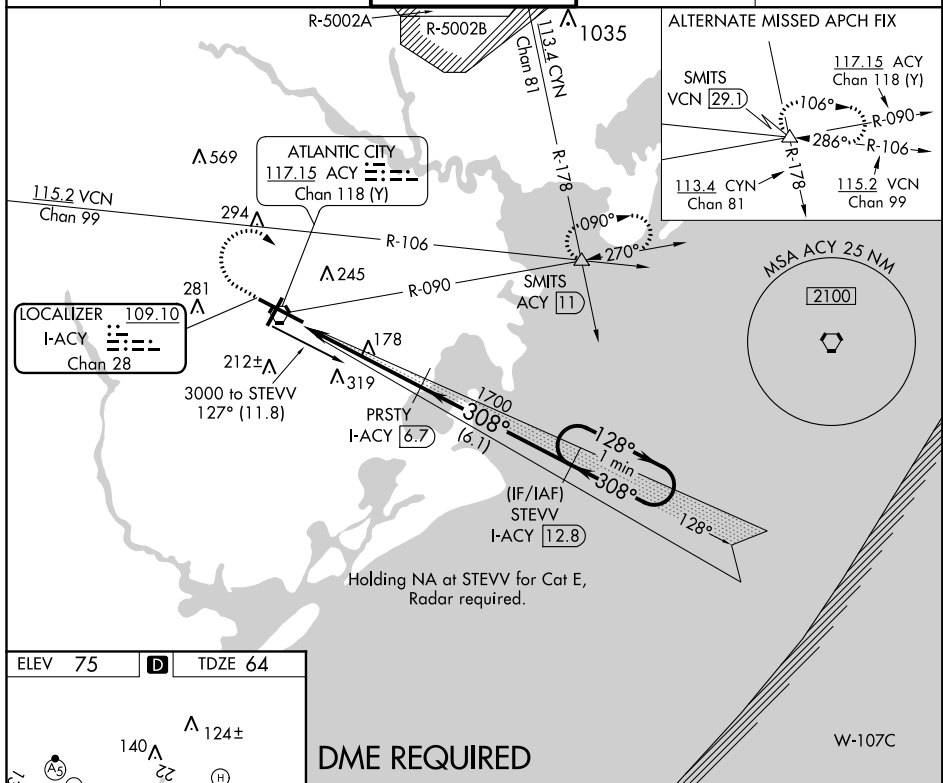


ILS or LOC/DME RWY 31
ATLANTIC CITY INTL (ACY)

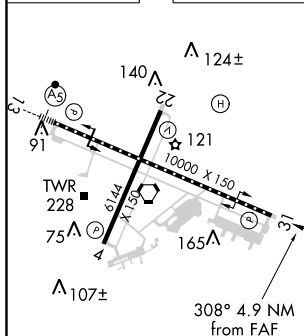


MISSED APPROACH: Climb to 500 then climbing right turn to 2000 via heading 130° and via ACY R-090 to SMITS INT/ACY 11 DME and hold.

ATIS	ATLANTIC CITY APP CON	ATLANTIC CITY TOWER	GND CON	CLNC DEL
125.725 316.15	124.6 327.125	120.3 239.0	121.9 284.6	127.85 353.775

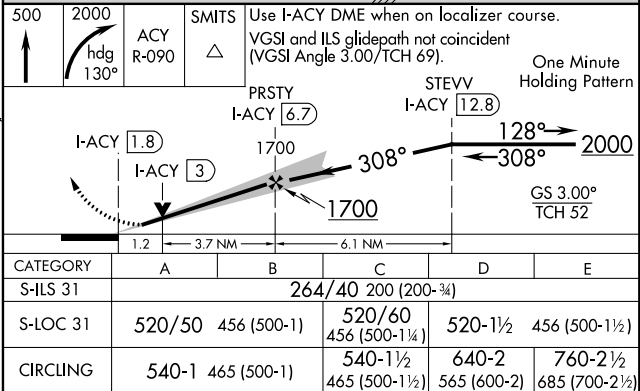


ELEV 75	D	TDZE 64
---------	----------	---------



TDZ/CL Rwy 13
HIRL Rwys 4-22 and 13-31
REIL Rwy 31

DME REQUIRED



ATLANTIC CITY, NEW JERSEY
Orig-C 16OCT14

39°27'N-74°35'W

ATLANTIC CITY INTL (ACY)
ILS or LOC/DME RWY 31