

WAAS CH 78231 W04A	APP CRS 038°	Rwy Idg TDZE Apt Elev	6144 68 75
--	------------------------	-----------------------------	---------------------------------------

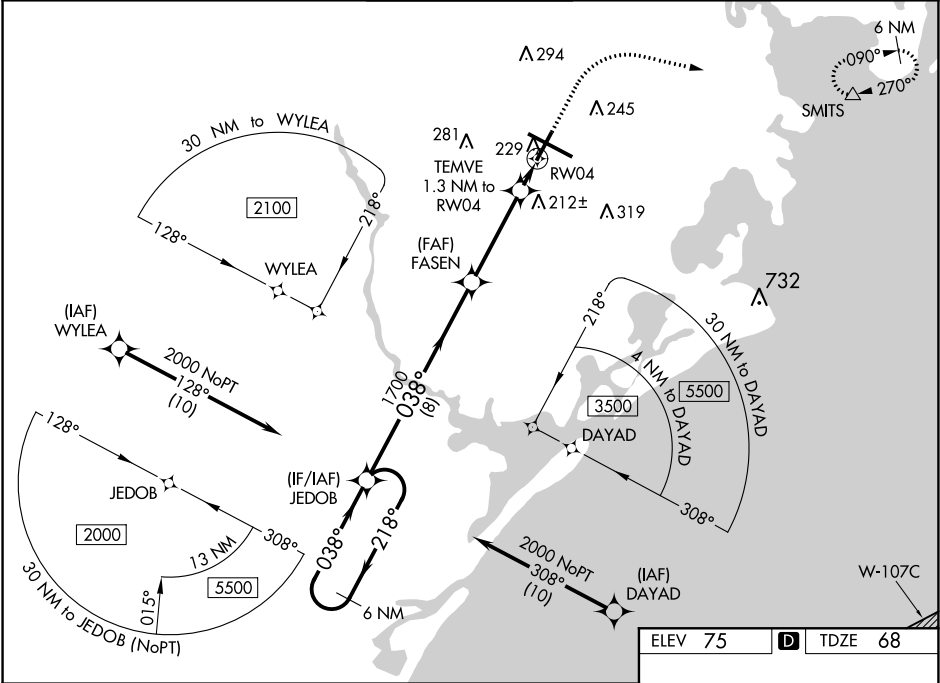
RNAV (GPS) RWY 4
ATLANTIC CITY INTL (ACY)

⚠ For uncompensated Baro-VNAV systems, LNAV/VNAV NA below -13°C (9°F) or above 54°C (130°F). DME/DME RNP-0.3 NA. Helicopter visibility reduction below 1 SM NA. Rwy 4 Straight-in and Circling minimums NA at night.

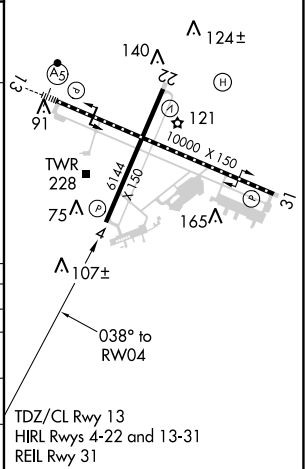
ASR

MISSED APPROACH: Climb to 600 then climbing right turn to 2000 direct SMITS and hold.

ATIS 125.725 316.15	ATLANTIC CITY APP CON 124.6 327.125	ATLANTIC CITY TOWER 120.3 239.0	GND CON 121.9 284.6	CLNC DEL 127.85 353.775
-------------------------------	---	---	-------------------------------	-----------------------------------



6 NM Holding Pattern		JEDOB		600 ↑		2000 ↷		SMITS △	
2000 ← 218°				FASEN 1700		TEMVE 1.3 NM to RW04		*LNAV only	
038° →		038°		1700		RW04			
GS 3.00° TCH 47				8 NM		3.7 NM		*520	
						1.3 NM			
CATEGORY	A	B	C	D	E				
LPV DA	318-1		250 (300-1)						
LNAV/VNAV DA	534-1½		466 (500-1½)						
LNAV MDA	480-1	412 (500-1)	480-1½		412 (500-1½)				
CIRCLING	540-1	465 (500-1)	540-1½	640-2	760-2½				
			465 (500-1½)	565 (600-2)	685 (700-2½)				



NE-2, 03 DEC 2020 to 31 DEC 2020

NE-2, 03 DEC 2020 to 31 DEC 2020