

WAAS CH <b>82524</b> <b>W01A</b>	APP CRS <b>013°</b>	Rwy Idg <b>5516</b> TDZE <b>72</b> Apt Elev <b>80</b>
--	------------------------	---

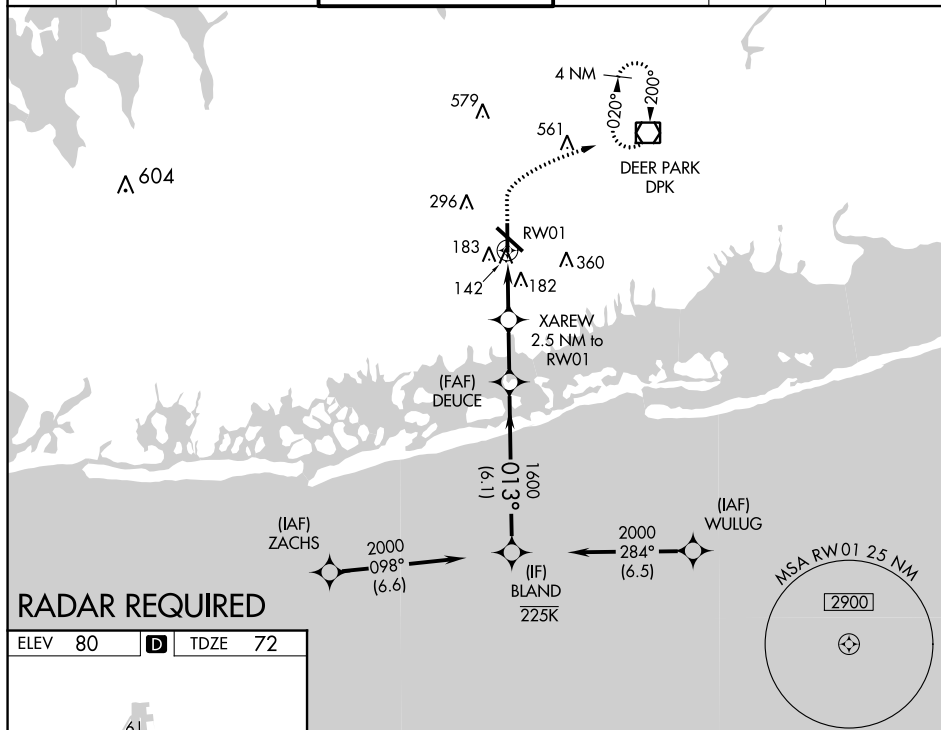
RNAV (GPS) RWY 1  
REPUBLIC (FRG)

RNP APCH.

**T** When local altimeter setting not received, use Islip altimeter setting and increase  
**A** all MDA 40 feet and LNAV Cats C/D visibility  $\frac{1}{8}$  SM and Circling Cats C/D  
visibility  $\frac{1}{4}$  SM. Rwy 1 helicopter visibility reduction below 1 SM NA.

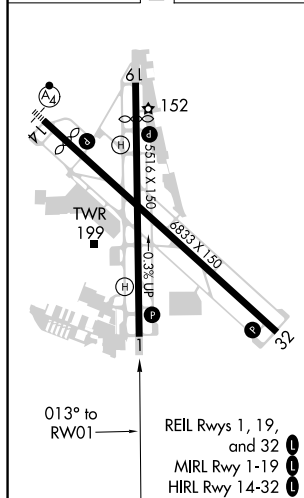
**MISSED APPROACH:** (Max 190K)  
Climb to 2000 then climbing right  
turn to 3000 direct DPK VOR/DME  
and hold.

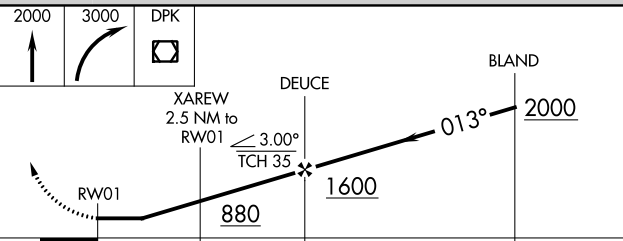
ATIS 126.65	NEW YORK APP CON 128.125 269.0	REPUBLIC TOWER ★ 118.8 (CTAF) 0 279.65	GND CON 121.6 269.6	CLNC DEL 128.25	UNICOM 122.95
----------------	-----------------------------------	---	------------------------	--------------------	------------------



## RADAR REQUIRED

ELEV 80	<b>D</b>	TDZE 72
---------	----------	---------



2000 ↑	3000 ↗	DPK □				
CATEGORY	A	B	C	D		
LP MDA	400-1 328 (400-1)					
LNAV MDA	460-1 388 (400-1)		460-1 $\frac{1}{8}$ 388 (400-1 $\frac{1}{8}$ )			
CIRCLING	560-1 480 (500-1)	600-1 520 (600-1)	720-1 $\frac{3}{4}$ 640 (700-1 $\frac{3}{4}$ )		720-2 640 (700-2)	

## RNAV (GPS) RWY 1