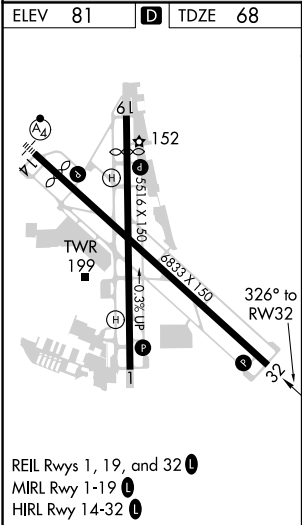
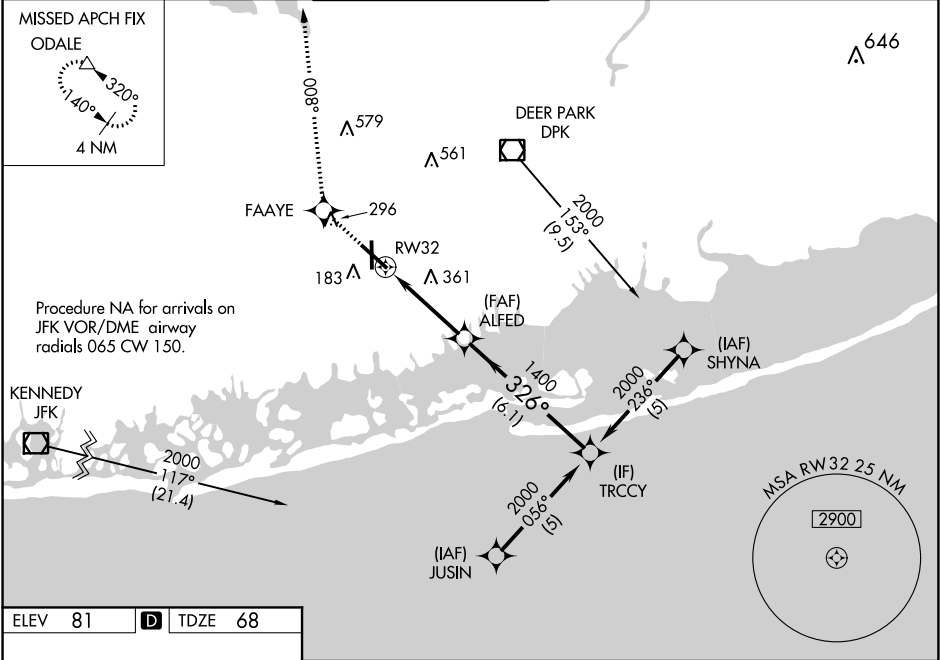


WAAS CH 70715 W32A	APP CRS 326°	Rwy Idg TDZE 68 Apt Elev 81
--	------------------------	---

RNAV (GPS) RWY 32

REPUBLIC (F/RG)

RNP APCH.					MISSED APPROACH: Climb to 3000 direct FAAYE and on track 008° to ODALE and hold.	
▼ ▲ Baro-VNAV NA when using Islip altimeter setting. For uncompensated Baro-VNAV systems, LNAV/VNAV NA below -15°C or above 38°C. Rwy 32 helicopter visibility reduction below 1 SM NA. When local altimeter setting not received, use Islip altimeter setting and increase all DA 37 feet and all MDA 40 feet; increase LNAV/VNAV all Cats and Circling Cat C and D visibility ¼ mile. VDP NA when using Islip altimeter setting.						
ATIS 126.65	NEW YORK APP CON 128.125 269.0		REPUBLIC TOWER ★ 118.8 (CTAF) 0 279.65	GND CON 121.6 269.6	CLNC DEL 128.25	UNICOM 122.95



3000	FAAYE	tr 008°	ODALE	VGSI and RNAV glidepath not coincident (VGSI Angle 3.00/TCH 53).	
* LNAV only.		TRCCY		2000	
RW32		ALFED		326°	
1.8 NM to RW32		1400		Procedure Turn NA	
1.8 NM		2 NM		GP 3.10° TCH 65	
CATEGORY		A		B	
LPV DA		369-1		301 (300-1)	
LNAV/VNAV DA		761-2¼		693 (700-2¼)	
LNAV MDA		680-1 612 (600-1)		680-2 612 (600-1¾)	
CIRCLING		680-1 599 (600-1)		720-1¾ 639 (700-1¾)	
				720-2 639 (700-2)	