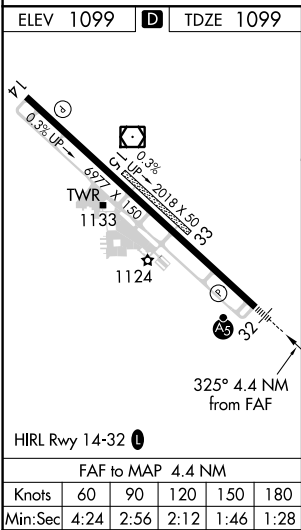
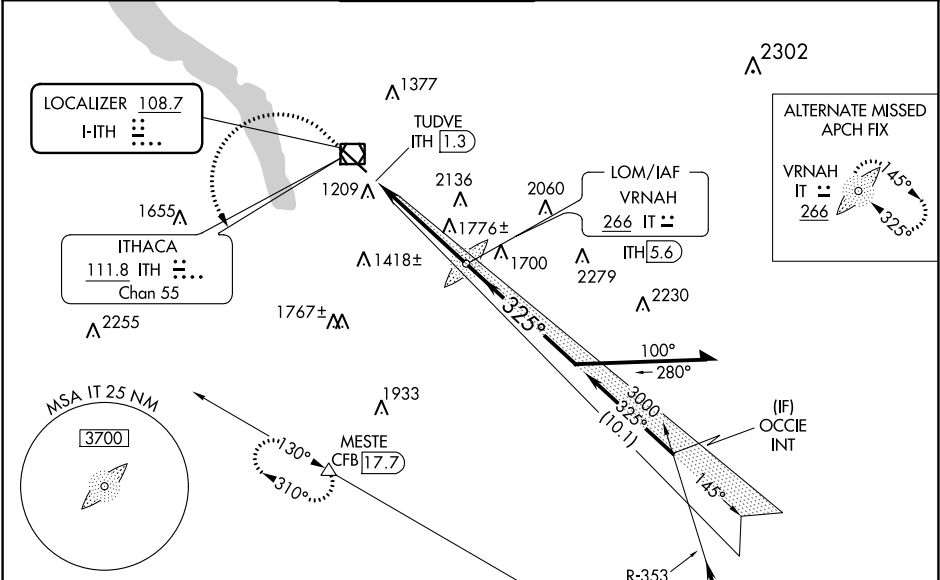


LOC I-ITH 108.7	APP CRS 325°	Rwy Idg TDZE 1099 Apt Elev 1099
---------------------------	------------------------	---

ILS or LOC RWY 32
ITHACA TOMPKINS RGNL (ITH)

ADF or DME required for LOC only. DME required.			MISSED APPROACH: Climb to 2600 then climbing left turn to 4000 on CFB VOR/DME R-310 to MESTE/CFB VOR/DME 17.7 DME and hold.		
Circling NA to Rwy 15 and 33. Inop table does not apply to S-ILS 32. When local altimeter setting not received, use Elmira altimeter setting and increase S-ILS 32 DA to 1433 feet and all MDA 100 feet; increase S-LOC 32 Cat B visibility to RVR 5500 and increase S-LOC Cat C/D visibility ½ SM and Circling Cat B/C visibility ¼ SM. DME from ITH VOR/DME. Simultaneous reception of I-ITH LOC and ITH DME required.			MALSR		
ATIS 125.175	ELMIRA APP CON ★ 124.3 257.8	ITHACA TOWER ★ 119.6 (CTAF) 0	GND CON 121.8	CLNC DEL 121.8	UNICOM 122.95



IAF
BINGHAMTON
112.2 CFB
Chan 59

Procedure NA for arrival on CFB
VOR/DME airway radials 275 CW
015 and V374 northwest bound.

CATEGORY	A	B	C	D
S-ILS 32		1349/40	250 (300-¾)	
S-LOC 32	2040/40	941 (1000-¾)	2040-2	941 (1000-2)
CIRCLING	2040-1¼	941 (1000-1¼)	2040-2¾ 941 (1000-2¾)	2440-3 1341 (1400-3)

NE-2, 03 DEC 2020 to 31 DEC 2020

NE-2, 03 DEC 2020 to 31 DEC 2020