

ITHACA, NEW YORK

AL-779 (FAA)

20030

WAAS CH 62815 W32A	APP CRS 325°	Rwy Idg 6602 TDZE 1099 Apt Elev 1099
--	------------------------	---

RNAV (GPS) RWY 32
ITHACA TOMPKINS RGNL (ITH)

RNP APCH.

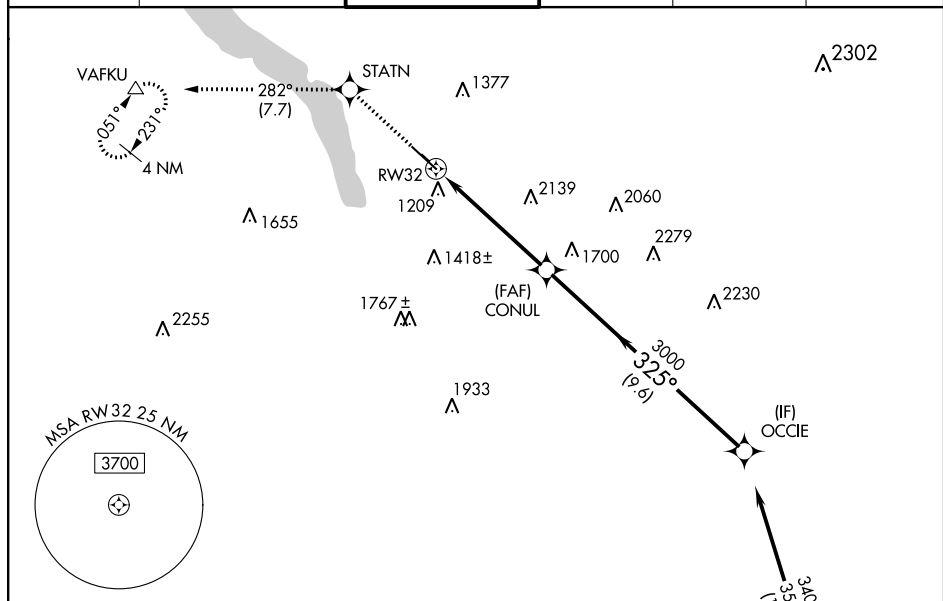
T Circling NA to Rwy 15 and 33. Inop table does not apply to LNAV Cat A. Rwy 32 helicopter visibility reduction below $\frac{3}{4}$ SM NA. When local altimeter setting not received, use **E** Elmira altimeter setting and increase all DA 84 feet and all MDA 100 feet. For inop MALSR, increase LNAV Cat B visibility $\frac{1}{4}$ mile. For inop MALSR, when using Elmira altimeter setting, increase LPV all Cats visibility to RVR 6000, and increase LNAV Cat B visibility to $\frac{1}{2}$.

MAALSD

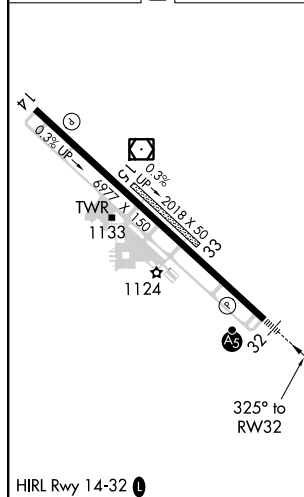


MISSED APPROACH:
Climb to 3700 direct
STATN and on track
282° to VAFKU and
hold.

ATIS 125.175	ELMIRA APP CON ★ 124.3 257.8	ITHACA TOWER ★ 119.6 (CTAF) 0	GND CON 121.8	CLNC DEL 121.8	UNICOM 122.95
-----------------	---------------------------------	----------------------------------	------------------	-------------------	------------------



ELEV 1099	D	TDZE 1099
-----------	----------	-----------



3700 ↑	STATN ✱	tr 282° △				
* LNAV only			* 3.4 NM to RW32			GP 3.20° TCH 54
RW32		3.4 NM	2 NM	9.6 NM		
CATEGORY	A		B	C	D	
LPV DA	1385/40			286 (300-¾)		
LNAV MDA	2300/60 1201 (1300-1¼)			2300-2½ 1201 (1300-2½)		
C CIRCLING	2300-1¼ 1201 (1300-1¼)		2300-1½ 1201 (1300-1½)	2300-3 1201 (1300-3)		2440-3 1341 (1400-3)

ITHACA, NEW YORK
Orig-C 30JAN20

42°29'N-76°28'W

ITHACA TOMPKINS RGNL (ITH)
RNAV (GPS) RWY 32

NE-2, 03 DEC 2020 to 31 DEC 2020