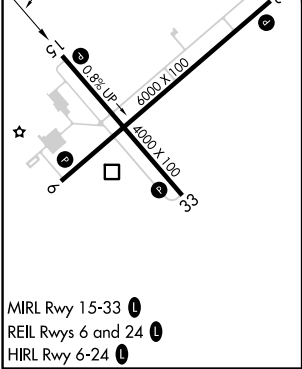
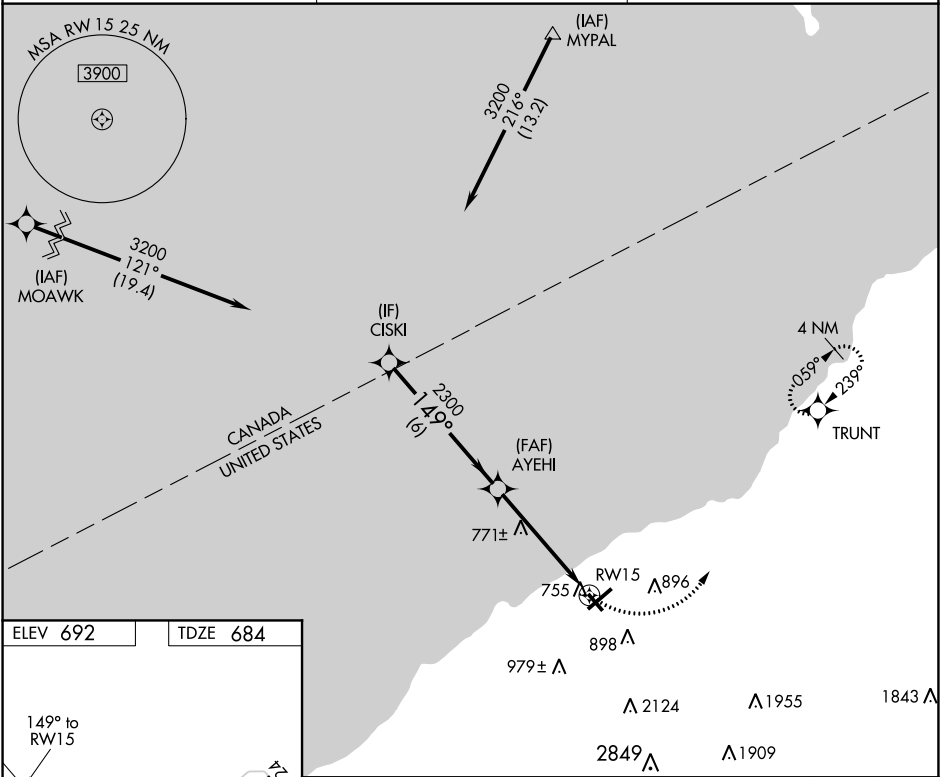


APP CRS	Rwy Idg	<b>4000</b>
<b>149°</b>	TDZE	<b>684</b>
	Apt Elev	<b>692</b>

**RNAV (GPS) RWY 15**  
CHAUTAUQUA COUNTY/DUNKIRK (DKK)

RNP APCH.	<p>⚠ Circling to Rwy 6, 24, 33 NA at night. ⚠ Circling Cat D NA southeast of Rwy 6 and southwest of Rwy 33. ❄ -20°C Rwy 15 helicopter visibility reduction below <math>\frac{3}{4}</math> SM NA.</p>	MISSED APPROACH: Climbing left turn to 3200 direct TRUNT and hold, continue climb-in-hold to 3200.
-----------	--	--

ASOS <b>119.275</b>	BUFFALO APP CON <b>126.5 317.6</b>	UNICOM <b>123.075 (CTAF) 0</b>
------------------------	---------------------------------------	-----------------------------------



MIRL Rwy 15-33 0  
REIL Rwy 6 and 24 0  
HIRL Rwy 6-24 0

Visual Segment - Obstacles.				3200	TRUNT
CATEGORY	A	B	C	D	
LNAV MDA	1140-1	456 (500-1)	1140-1 $\frac{3}{8}$	456 (500-1 $\frac{3}{8}$ )	
CIRCLING	1200-1 508 (600-1)	1320-1 628 (700-1)	1640-2 $\frac{3}{4}$ 948 (1000-2 $\frac{3}{4}$ )	2140-3 1448 (1500-3)	

NE-2, 03 DEC 2020 to 31 DEC 2020

NE-2, 03 DEC 2020 to 31 DEC 2020