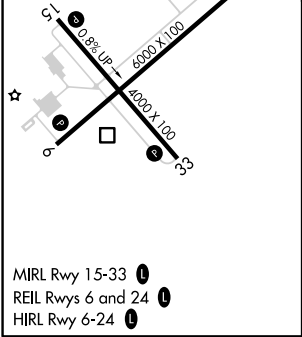
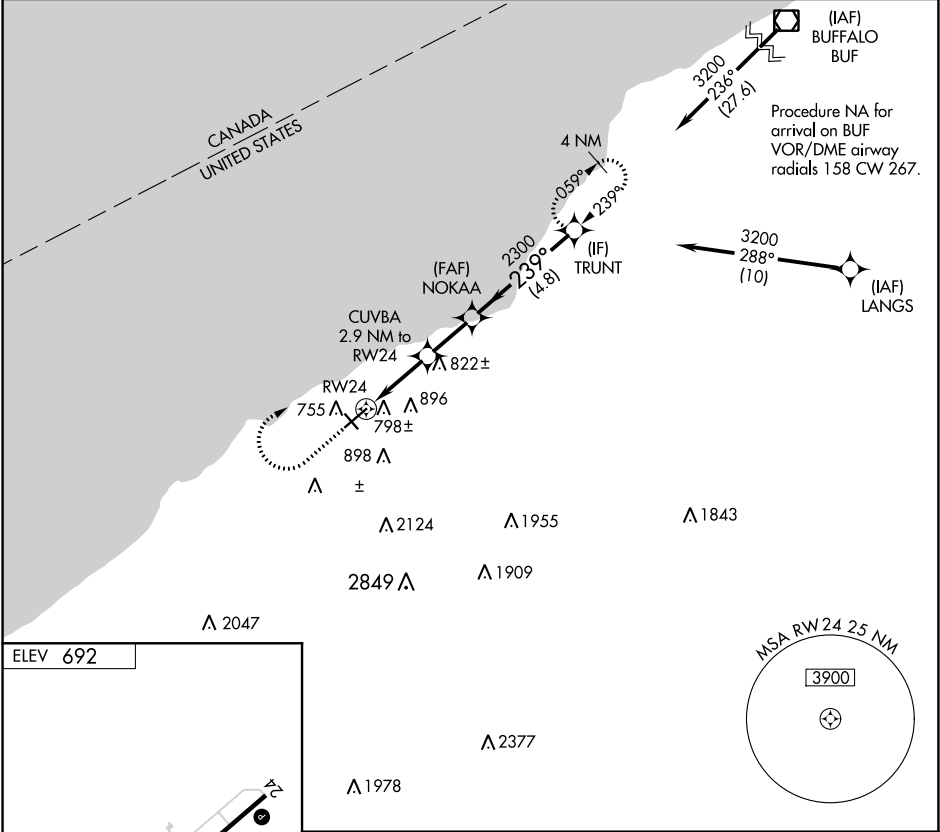





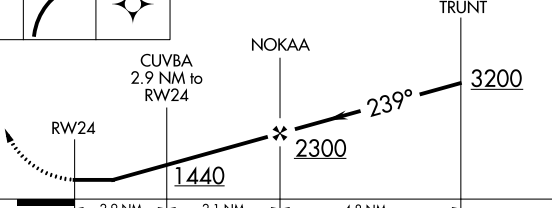

APP CRS	Rwy Idg	N/A
239°	TDZE	N/A
	Apt Elev	692

RNAV (GPS)-A
CHAUTAUQUA COUNTY/DUNKIRK (DKK)

RNP APCH.	MISSED APPROACH: Climb to 1900 then climbing right turn to 3200 direct TRUNT and hold.
<div><div>▼</div><div>▲</div><div>❄</div></div> <div><div>Circling Cat D NA southeast of Rwy 6 and southwest of Rwy 33.</div><div>Circling Rwy 6, 24, 33 NA at night.</div><div>-20°C</div></div>	

ASOS 119.275	BUFFALO APP CON 126.5 317.6	UNICOM 123.075 (CTAF) 1
-----------------	--------------------------------	----------------------------



1900	3200	TRUNT	Visual Segment - Obstacles.	
				
				
CATEGORY	A	B	C	D
 CIRCLING	1200-1 508 (600-1)	1320-1 628 (700-1)	1640-2 ³ / ₄ 948 (1000-2 ³ / ₄)	2140-3 1448 (1500-3)