

LOC/DME I-TJL	APP CRS	Rwy Idg	6230
110.15	195°	TDZE	6
Chan 38 (Y)		Apt Elev	8

ILS or LOC RWY 19

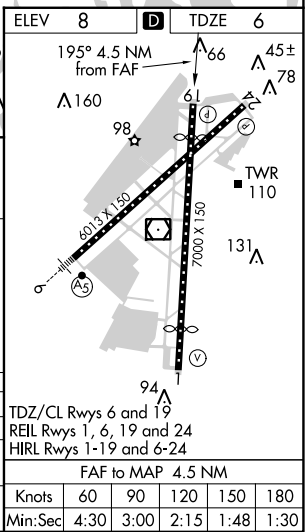
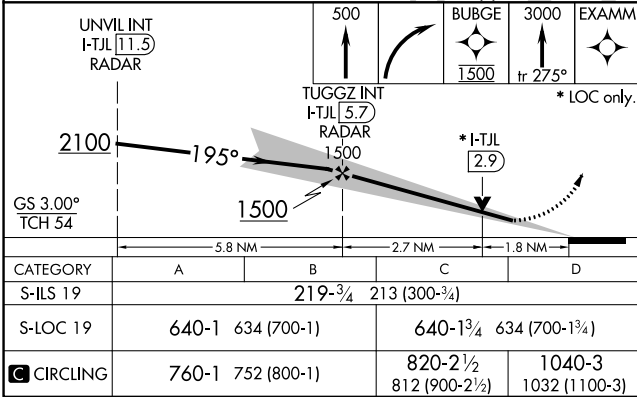
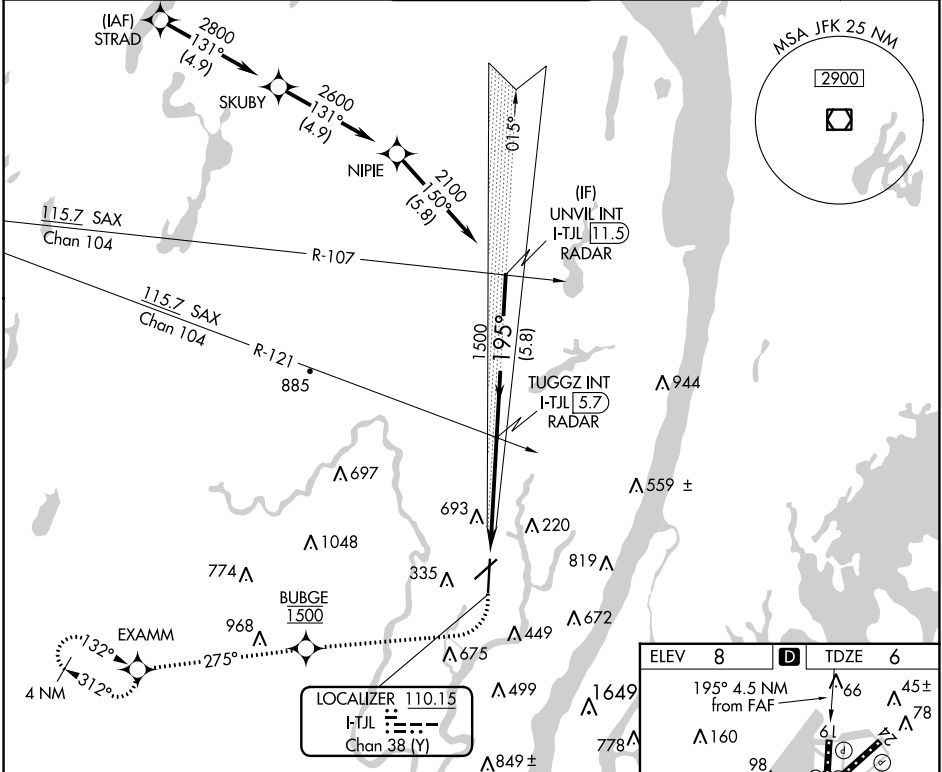
TETERBORO (TEB)

RNAV 1-GPS or RADAR required for procedure entry.
From STRAD: RNAV 1-GPS required.
RADAR required. RNAV 1-GPS from MAP to EXAMM.

MISSED APPROACH: Climb to 500 then climbing right turn direct BUBGE, cross BUBGE at 1500, then climb to 3000 on track 275° to EXAMM and hold, continue climb-in-hold to 3000.

Circling NA for Cats B, C, D northwest of Rwy 6-19.

D-ATIS	NEW YORK APP CON	TETERBORO TOWER	GND CON	CLNC DEL	CPDLC
114.2 132.85	127.6 379.9	119.5	121.9	128.05	



NE-2, 03 DEC 2020 to 31 DEC 2020

NE-2, 03 DEC 2020 to 31 DEC 2020