


WAAS CH <b>65634</b> <b>W06B</b>	APP CRS <b>063°</b>	Rwy Idg TDZE Apt Elev	<b>6013</b> <b>6</b> <b>8</b>
--	------------------------	-----------------------------	-------------------------------------

RNAV (GPS) X RWY 6

TETERBORO (TEB)

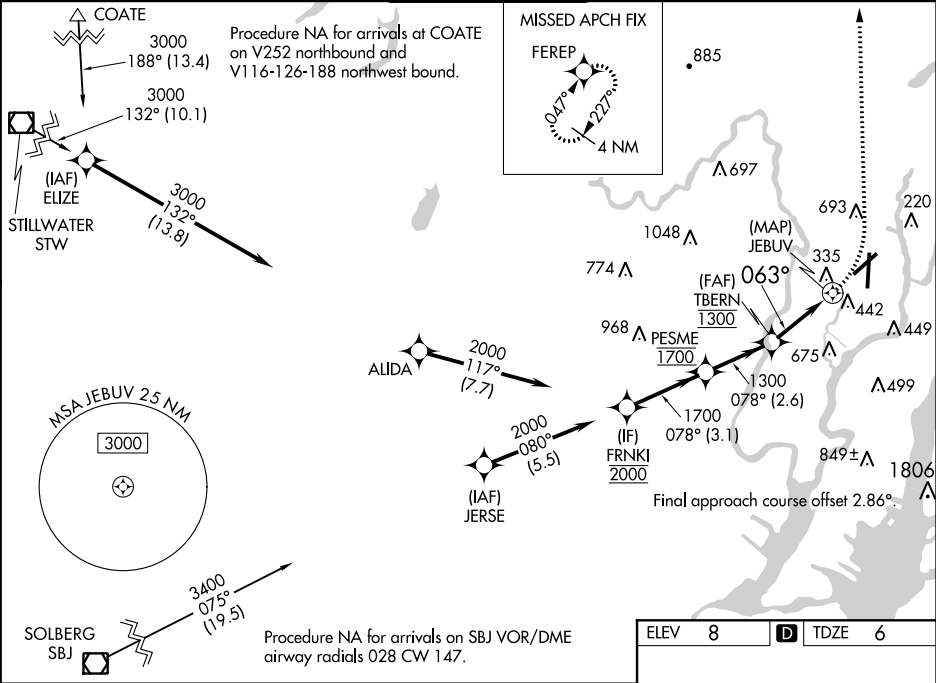
RNP APCH

For uncompensated Baro-VNAV systems, LNAV/VNAV NA below -13°C (9°F) or above 54°C (130°F). Circling NA for Cats B, C and D NW of Rwy 6 and 19. For inop ALS, increase LPV all Cats visibility to 1½ SM, LNAV/VNAV all Cats visibility to 2½ SM, and LNAV Cats A/B visibility to 1¼ SM. When Circling to Rwy 24 at night, operational VGSI required, remain on or above VGSI glidepath until threshold.

MALSR  


MISSED APPROACH:  
Climbing left turn to 2000 direct FERE and hold.

D-ATIS	NEW YORK APP CON	TETERBORO TOWER	GND CON	CLNC DEL	CPDLC
114.2 132.85	127.6 379.9	119.5	121.9	128.05	



FRNKI		2000		078°		PESME		1700		TBERN		1300		063°		JEBUV		1.1	
GP 3.00°		TCH 55		3.1 NM		2.6 NM		2 NM		0.8		1.1							
CATEGORY		A		B		C		D											
LPV DA		459/55		453 (500-1)															
LNAV/VNAV DA		672-1⅞		666 (700-1⅞)															
LNAV MDA		660/45		654 (700-¾)		660-1⅜		654 (700-1⅜)											
CIRCLING		760-1¼		752 (800-1¼)		820-2½		812 (900-2½)		1040-3		1032 (1100-3)							

