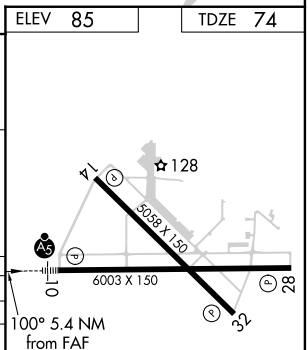
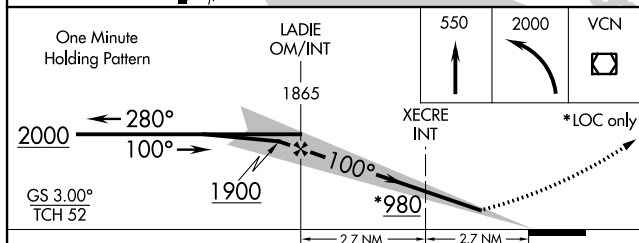
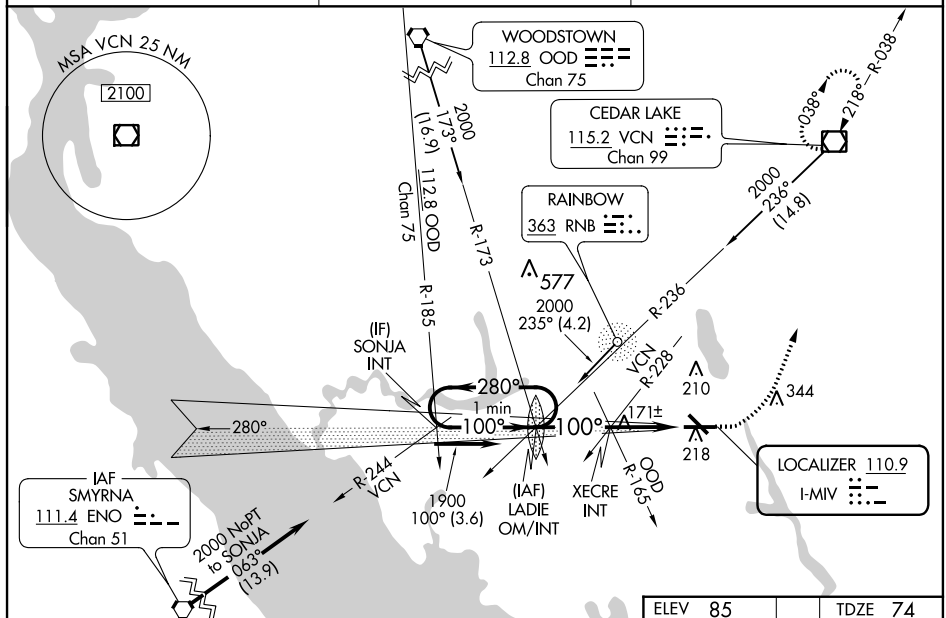


# ILS or LOC RWY 10

MALSR

**MISSED APPROACH:** Climb to 550 then climbing left turn to 2000 direct VCN VOR/DME and hold.

UNICOM  
123.0 (CTAF) **L**



CATEGORY	A	B	C	D
S-ILS 10	347-1 273 (300-1)			
S-LOC 10	980-1¼ 906 (900-1¼)	980-2½ 906 (900-2½)		
CIRCLING	980-1¼ 895 (900-1¼)	980-2¾ 895 (900-2¾)	980-3 895 (900-3)	
XECRE FIX MINIMUMS (DUAL VOR RECEIVERS REQUIRED)				
S-LOC 10	440-1 366 (400-1)			
CIRCLING	520-1 435 (500-1)	540-1 455 (500-1)	540-1½ 455 (500-1½)	640-2 555 (600-2)

MIRL Rwy's 10-28 and 14-32 <b>L</b>					
FAF to MAP 5.4 NM					
Knots	60	90	120	150	180
Min:Sec	5:24	3:36	2:42	2:10	1:48

NE-2, 03 DEC 2020 to 31 DEC 2020