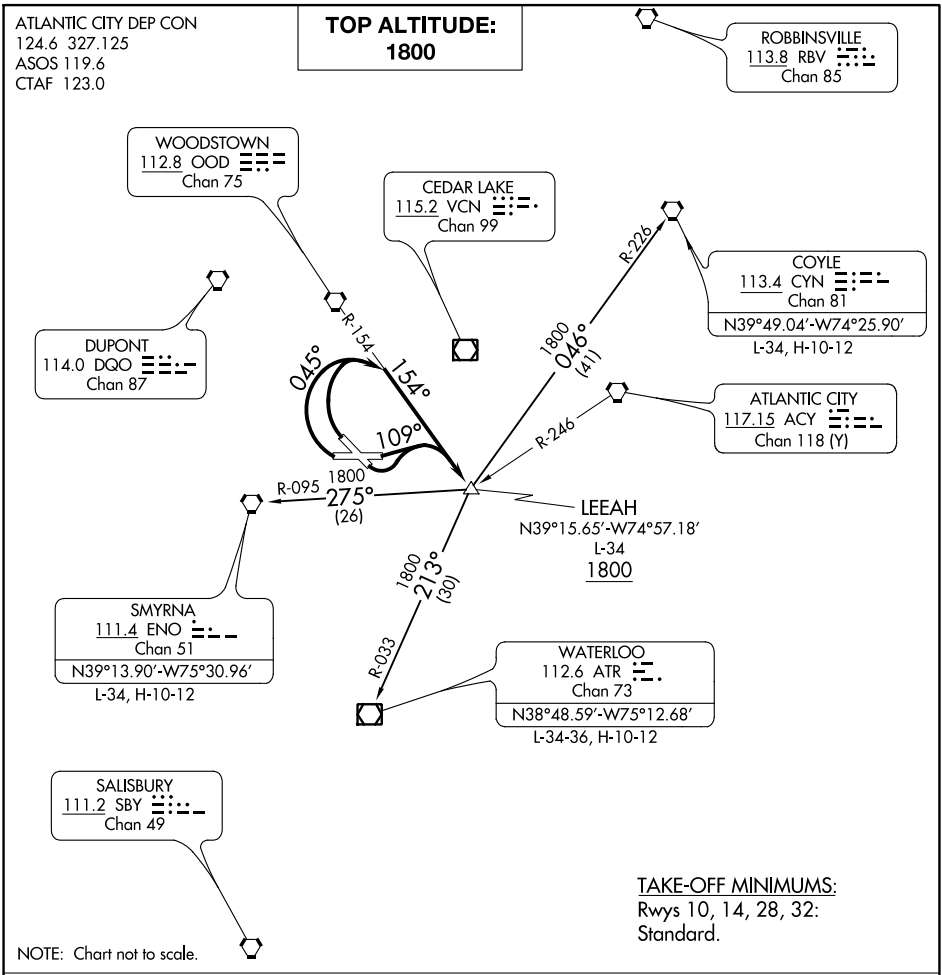


LEEAH FIVE DEPARTURE



**DEPARTURE ROUTE DESCRIPTION**

**TAKEOFF RUNWAYS 28, 32:** Turn right heading 045° and OOD R-154 to LEEAH INT, then via (transition) or (assigned route). Thence....

**TAKEOFF RUNWAYS 10, 14:** Turn left heading 109° and OOD R-154 to LEEAH INT, then via (transition) or (assigned route). Thence....

....Maintain 1800, expect filed altitude/flight level 10 minutes after departure.

**COYLE TRANSITION (LEEAH5.CYN):** From over LEEAH INT via CYN R-226 to CYN VORTAC.

**SMYRNA TRANSITION (LEEAH5.ENO):** From over LEEAH INT via ENO R-095 to ENO VORTAC.

**WATERLOO TRANSITION (LEEAH5.ATR):** From over LEEAH INT via ATR R-033 to ATR VOR/DME.