

WAAS CH <b>53723</b> <b>W10A</b>	APP CRS <b>101°</b>	Rwy Idg TDZE Apt Elev	<b>6003</b> <b>74</b> <b>85</b>
--	------------------------	-----------------------------	---------------------------------------

RNAV (GPS) RWY 10  
MILLVILLE MUNI (MIV)

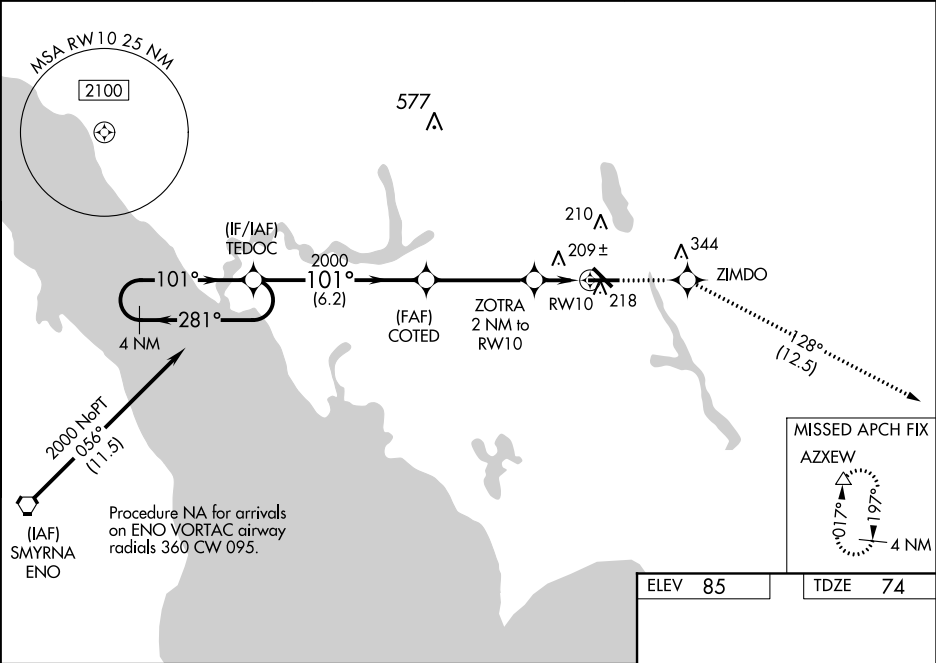
⚠ When VGSI inop, Circling Rwy 32 NA at night. For uncompensated Baro-VNAV systems, LNAV/VNAV NA below -15°C (5°F) or above 43°C (109°F). DME/DME RNP-0.3 NA. When local altimeter setting not received, use Atlantic City altimeter setting and increase LPV DA to 330, LNAV/VNAV DA to 571, and all MDA 60 feet; increase LNAV/VNAV all Cat and LNAV Cat C and D visibility ¼ mile. Baro-VNAV and VDP NA when using Atlantic City altimeter setting. For inop MALSR when using Atlantic City altimeter setting, increase LNAV/VNAV all Cat visibility to 1%.

MALSR

⚠

MISSED APPROACH: Climb to 2000 direct ZIMDO and on track 128° to AZXEW and hold.

ASOS <b>119.6</b>	ATLANTIC CITY APP CON <b>124.6 327.125</b>	UNICOM <b>123.0 (CTAF) 0</b>
----------------------	---	---------------------------------



4 NM Holding Pattern		TEDOC	COTED	2000	ZIMDO	tr 128°	AZXEW
2000		2000	2000	2000	2000	2000	2000
GP 3.00° TCH 52		2000	2000	2000	2000	2000	2000
6.2 NM		3.9 NM	0.9 NM	1.1 NM	*LNAV only		
CATEGORY	A	B	C	D			
LPV DA	274-1½		200 (200-½)				
LNAV/VNAV DA	515-1		441 (500-1)				
LNAV MDA	460-½	386 (400-½)	460-5/8	386 (400-5/8)			
CIRCLING	520-1 435 (500-1)	540-1 455 (500-1)	540-1½ 455 (500-1½)	640-2 555 (600-2)			

MIRL Rwy 10-28 and 14-32 0