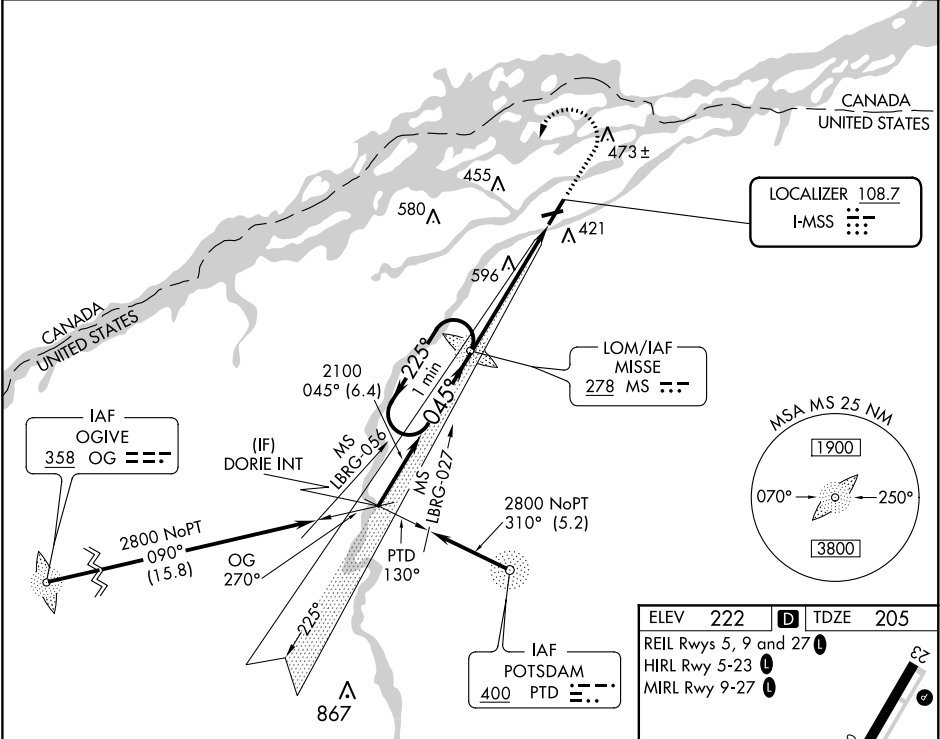


LOC I-MSS <b>108.7</b>	APP CRS <b>045°</b>	Rwy Idg TDZE Apt Elev	<b>5601</b> <b>205</b> <b>222</b>
---------------------------	------------------------	-----------------------------	---

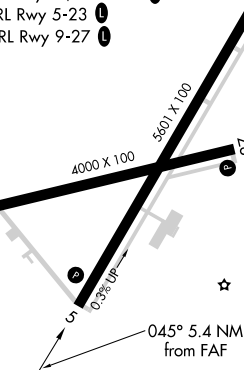
ILS or LOC RWY 5  
MASSENA INTL-RICHARDS FIELD (MSS)

ADF required. ADF and RADAR required for procedure entry.		MISSED APPROACH: Climb to 1200 then climbing left turn to 2300 direct MISSE LOM and hold.
	Circling Rwy 9, 23, 27 NA at night. When local altimeter setting not received, use Potsdam altimeter setting and increase all DAs 73 feet and all MDAs 80 feet; increase S-ILS all Cats visibility 1/8 SM, S-LOC Cat C visibility 1/8 SM and increase Circling Cat C visibility 1/8 SM, and Cat D 1/4 SM.	

ASOS <b>128.075</b>	BOSTON CENTER <b>135.25 377.1</b>	UNICOM <b>123.0 (CTAF) 0</b>
------------------------	--------------------------------------	---------------------------------



One Minute Holding Pattern		MISSE LOM 1994	1200	2300	MS
2300 ← 225° 045° →		2100	VGSI and ILS glideslope not coincident (VGSI Angle 3.00/TCH 58).		
GS 3.00° TCH 54		5.4 NM			
CATEGORY	A	B	C	D	
S-ILS 5		455-3/4	250 (300-3/4)		
S-LOC 5	800-1	595 (600-1)	800-13/4	595 (600-13/4)	
CIRCLING	800-1	578 (600-1)	800-13/4 578 (600-13/4)	900-2 1/4 678 (700-2 1/4)	

ELEV	222	D	TDZE	205	
REIL Rwys 5, 9 and 27					
HIRL Rwy 5-23					
MIRL Rwy 9-27					
					
FAF to MAP 5.4 NM					
Knots	60	90	120	150	180
Min:Sec	5:24	3:36	2:42	2:10	1:48

NE-2, 03 DEC 2020 to 31 DEC 2020

NE-2, 03 DEC 2020 to 31 DEC 2020