

WAAS CH 49120 W33A	APP CRS 329°	Rwy Idg 5186 TDZE 89 Apt Elev 99
----------------------------------------	------------------------	-------------------------------------------------------------

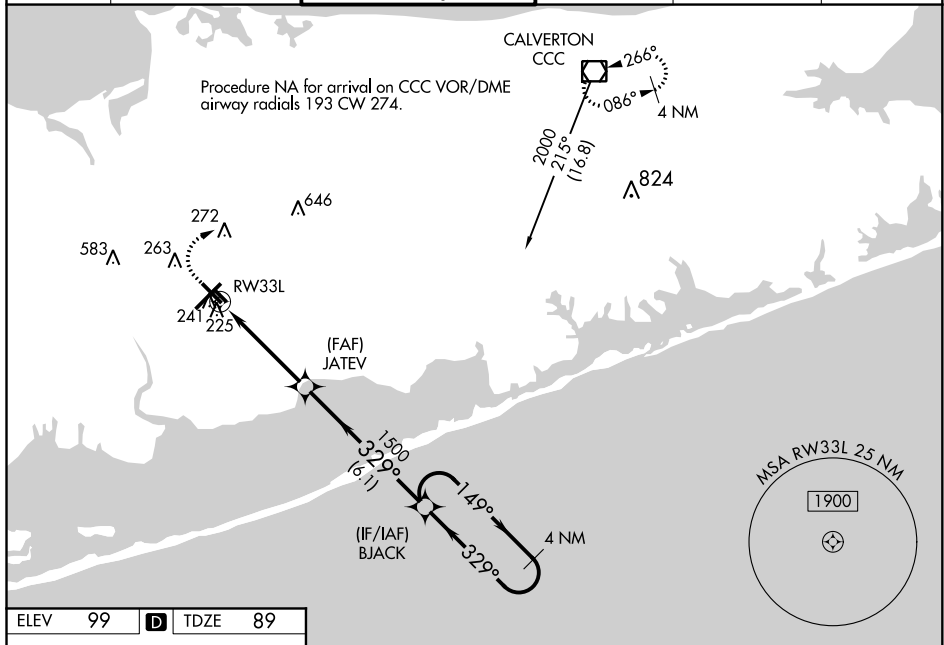
RNAV (GPS) RWY 33L

LONG ISLAND MAC ARTHUR (ISP)

T For uncompensated Baro-VNAV systems, LNAV/VNAV NA below 14°C (7°F) or above 54°C (130°F).
A DME/DME RNP-0.3 NA. When local altimeter setting not received, use Shirley altimeter setting and increase LPV DA to 367 feet, LNAV/VNAV DA to 440 feet and LPV and LNAV/VNAV visibility all Cats ½ mile, all MDA 40 feet, increase LNAV Cats C/D visibility ½ mile, and Circling Cats C/D visibility ¼ mile. VDP and Baro-VNAV NA when using Shirley altimeter setting. Helicopter visibility reduction below ¾ SM NA.

MISSED APPROACH:
Climb to 600 then
climbing right turn to
2000 direct CCC
VOR/DME and hold.

ATIS 120.725	NEW YORK APP CON 120.05 343.75	LONG ISLAND TOWER* 119.3 (CTAF) 0 335.5	GND CON 135.3	CLNC DEL 121.85	UNICOM 122.95
-----------------	-----------------------------------	--------------------------------------------	------------------	--------------------	------------------



ELEV	99	D	TDZE	89
------	----	----------	------	----

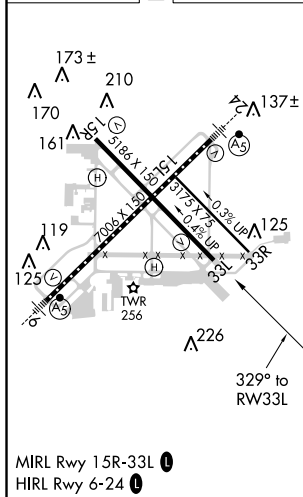


Diagram illustrating a 4 NM Holding Pattern (BJACK) with various flight parameters and a table of performance data.

Diagram Labels:

- 600, 2000 (Altitudes)
- CCC (Climb/Cruise/Descent)
- VGSI and RNAV glidepath not coincident (VGSI Angle 3.20/TCH 60).
- 4 NM Holding Pattern
- BJACK
- 149° (Heading)
- 329° (Heading)
- 2000 (Altitude)
- JATEV (Fix)
- 1500 (Altitude)
- 1500 (Altitude)
- GP 3.00° TCH 45°
- 1.1 (Distance)
- 3.2 NM (Distance)
- 6.1 NM (Distance)
- RW33L (Runway)
- *1.1 NM to RW33L
- *INAV only.

CATEGORY	A	B	C	D
LPV DA	339- $\frac{7}{8}$		250 (300- $\frac{7}{8}$)	
LNNAV/VNAV DA	412-1 $\frac{1}{8}$		323 (400-1 $\frac{1}{8}$)	
LNNAV MDA	500-1	411 (500-1)	500-1 $\frac{1}{4}$	411 (500-1 $\frac{1}{4}$)
C CIRCLING	600-1 501 (600-1)	660-1 561 (600-1)	660-1 $\frac{1}{2}$ 561 (600-1 $\frac{1}{2}$)	960-2 $\frac{3}{4}$ 861 (900-2 $\frac{3}{4}$)