

WAAS
CH **66010**
W06A

APP CRS
059°

Rwy Idg **7006**
TDZE **94**
Apt Elev **99**

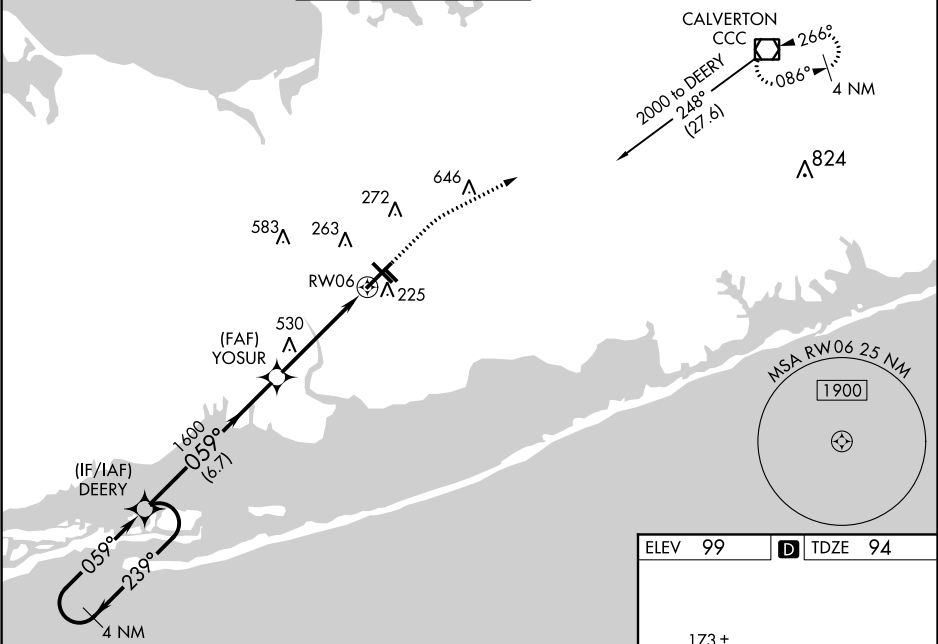
▼ For uncompensated Baro-VNAV systems, LNAV/VNAV NA below -14°C (7°F) or above 54°C (130°F). DME/DME RNP-0.3 NA. VDP and Baro-VNAV NA when using Shirley altimeter setting. When local altimeter setting not received, use Shirley altimeter setting and increase all DA 28 feet and all MDA 40 feet, increase LNAV/VNAV all Cats visibility to RVR 3000 and LNAV Cat C and D visibility to 4500. Increase Circling Cat C and D visibility ¼ mile. For inoperative MALSR, increase LNAV/VNAV all Cats visibility to RVR 4500 and LNAV Cat C and D to RVR 6000. For inoperative MALSR when using Shirley altimeter setting increase LNAV/VNAV all Cats visibility to RVR 5000.

▲ **RVR 1800 authorized with use of FD or AP or HUD to DA, NA when using Shirley altimeter setting.

RNAV (GPS) RWY 6

LONG ISLAND MAC ARTHUR (ISP)

ATIS 120.725	NEW YORK APP CON 120.05 343.75	LONG ISLAND TOWER* 119.3 (CTAF) 0335.5	GND CON 135.3	CLNC DEL 121.85	UNICOM 122.95
------------------------	--	--	-------------------------	---------------------------	-------------------------



4 NM Holding Pattern

DEERY

YOSUR

RW06

GP 3.00° TCH 52

6.7 NM

3.5 NM

1.1 NM

600

2000

CCC

*LNAV only.

CATEGORY	A	B	C	D
LPV DA	**294/24		200 (200-½)	
LNAV/VNAV DA	385/24		291 (300-½)	
LNAV MDA	500/24	406 (500-½)	500/40	406 (500-¾)
CIRCLING	600-1 501 (600-1)	660-1 561 (600-1)	660-1½ 561 (600-1½)	960-2¾ 861 (900-2¾)

ELEV 99

TDZE 94