

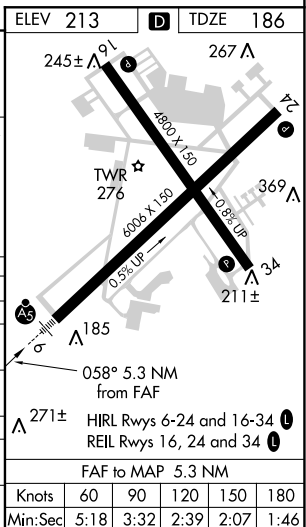
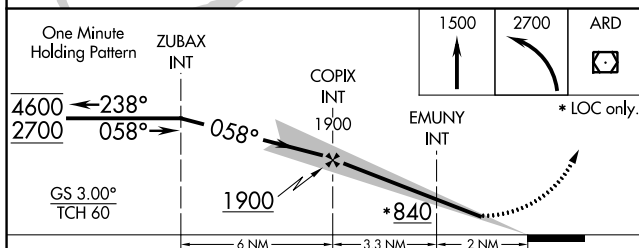
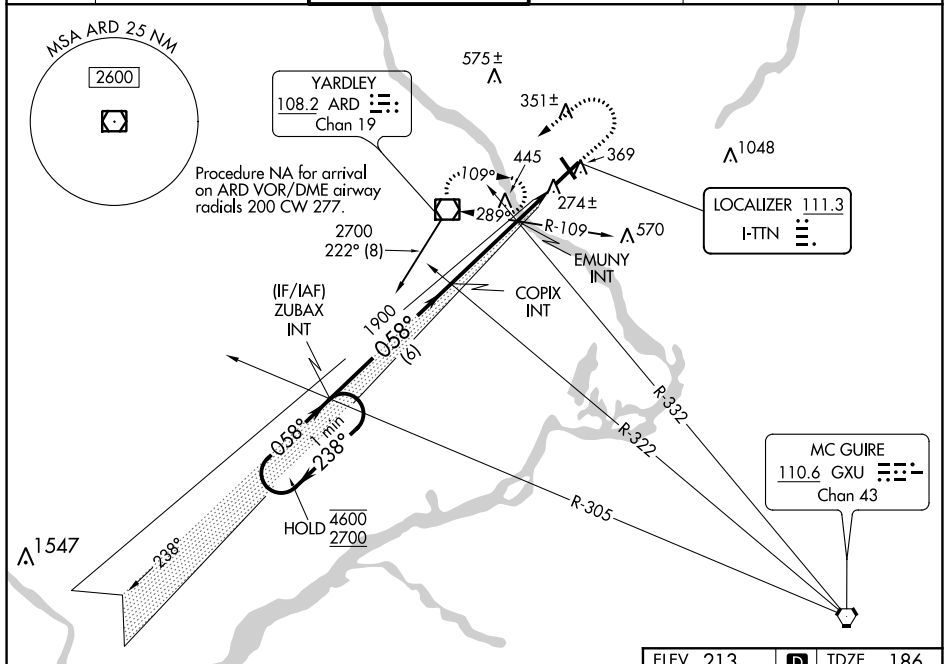
ILS or LOC RWY 6
TRENTON MERCER (TTN)

- T** When Circling to Rwy 34 at night, operational VGSI required, remain on or above VGSI glidepath until threshold. For inop ALS, increase **A** EMUNY fix minimums S-LOC 6 Cat C/D visibility to 1 SM.



MISSED APPROACH: Climb to 1500 then climbing left turn to 2700 direct ARD VOR/DME and hold.

ATIS 126.775	PHILADELPHIA APP CON 123.8 291.7	TRENTON TOWER ★ 120.7 (CTAF) 0 257.8	GND CON 121.9 257.8	CLNC DEL 121.9 257.8	UNICOM 122.95
-----------------	-------------------------------------	---	------------------------	-------------------------	------------------



NE-2, 03 DEC 2020 to 31 DEC 2020