

|  |                        |                             |   |
|--|------------------------|-----------------------------|---|
| WAAS<br>CH <b>99330</b><br><b>W16A</b> | APP CRS<br><b>158°</b> | Rwy Idg<br>TDZE<br>Apt Elev | <b>4800</b><br><b>213</b><br><b>213</b> |
|--|------------------------|-----------------------------|---|

RNAV (GPS) RWY 16

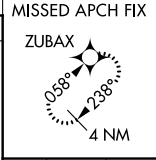
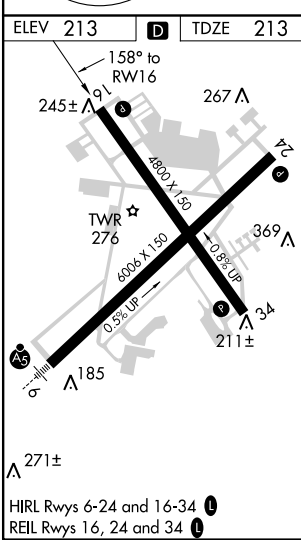
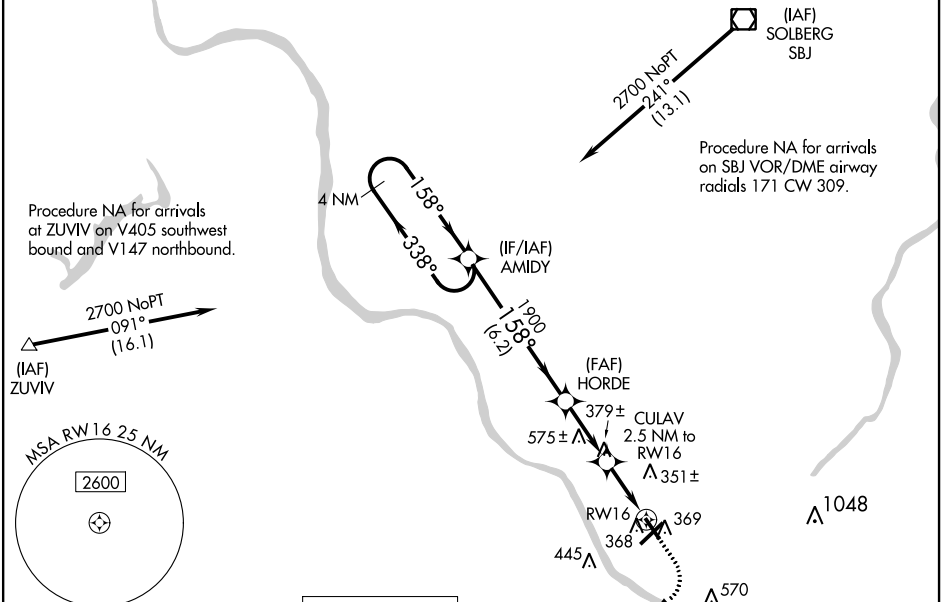
TRENTON MERCER (TTN)

▼ Night Landing: Rwy 34 operational VGSi required, remain on or above VGSi glidepath until threshold.  
Baro-VNAV NA when using Northeast Philadelphia altimeter setting. For uncompensated Baro-VNAV systems, LNAV/VNAV NA below -15°C (5°F) or above 54°C (130°F). DME/DME RNP-0.3 NA.

▲ Helicopter visibility reduction below ¾ SM NA. When local altimeter setting not received use Northeast Philadelphia altimeter setting; increase LPV DA to 510 feet and all Cats visibility ½ SM, LNAV/VNAV DA to 576 feet; increase all MDA 60 feet and LNAV Cat C/D visibility ½ SM and Circling Cat C visibility ½ SM.

MISSED APPROACH:  
Climb to 1500 then climbing right turn to 2700 direct ZUBAX and hold.

|                        |  |  |                               |                                |                         |
|------------------------|--|--|-------------------------------|--------------------------------|-------------------------|
| ATIS<br><b>126.775</b> | PHILADELPHIA APP CON<br><b>123.8 291.7</b> | TRENTON TOWER ★<br><b>120.7 (CTAF) 0 257.8</b> | GND CON<br><b>121.9 257.8</b> | CLNC DEL<br><b>121.9 257.8</b> | UNICOM<br><b>122.95</b> |
|------------------------|--|--|-------------------------------|--------------------------------|-------------------------|



|                 |  |   |  |  |  |
|-----------------|--|---|--|--|--|
| 1500 2700 ZUBAX |  | VGSi and RNAV glidepath not coincident<br>(VGSi Angle 3.00/TCH 40). |  | 4 NM Holding Pattern                       |  |
|                 |  |   |  |  |  |
| * LNAV only.    |  | CULAV 2.5 NM to RW16  |  | AMIDY                                      |  |
|                 |  | HORDE 1900  |  | 338° 2700                                  |  |
|                 |  | 158° 1900   |  | 158°                                       |  |
|                 |  | 1.2 1.3 2.6 NM 6.2 NM   |  | GP 3.00° TCH 55                            |  |
| CATEGORY        |  | A   |  | B C D                                      |  |
| LPV DA          |  | 463-¾ 250 (300-¾)   |  |  |  |
| LNAV/VNAV DA    |  | 529-1 316 (400-1)   |  |  |  |
| LNAV MDA        |  | 640-1 427 (500-1)   |  | 640-1¼ 427 (500-1¼)                        |  |
| CIRCLING        |  | 680-1 467 (500-1)   |  | 760-1½ 960-2½<br>547 (600-1½) 747 (800-2½) |  |

NE-2, 03 DEC 2020 to 31 DEC 2020

NE-2, 03 DEC 2020 to 31 DEC 2020