

APP CRS	Rwy Idg	6006
239°	TDZE	193
	Apt Elev	212

RNAV (RNP) Y RWY 24

TRENTON MERCER (TTN)

T For uncompensated Baro-VNAV systems, procedure NA below -13°C (8°F) or above 54°C (130°F).
When VGSI inop, procedure NA at night.
RF required.
GPS required.

MISSED APPROACH: Climb to 2700 on track 239° to ZUBAX and hold.

ATIS
126.775

PHILADELPHIA APP CON
123.8 291.7

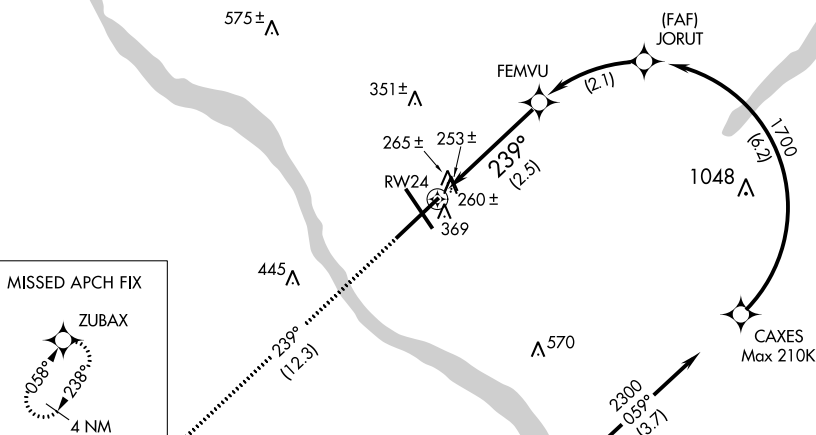
TRENTON TOWER ★
120.7 (CTAF) **L** 257.8

GND CON
121.9 257.8

CLNC DEL
121.9 257.8

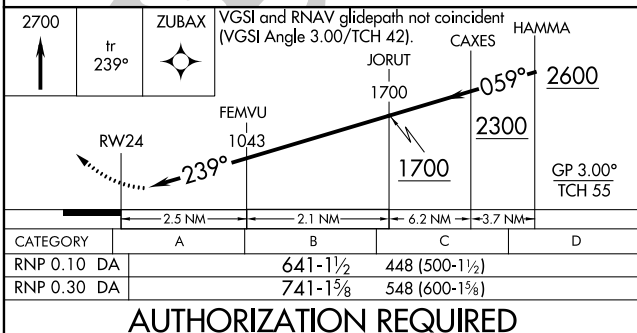
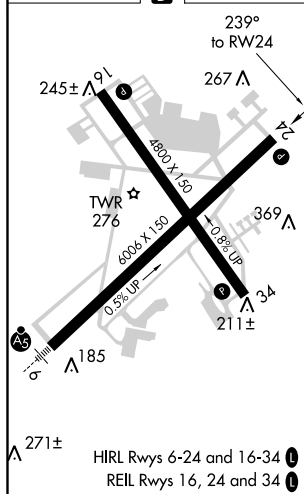
UNICOM
122.95

RADAR REQUIRED



NE-2, 03 DEC 2020 to 31 DEC 2020

ELEV 212	D	TDZE 193
----------	----------	----------



TRENTON, NEW JERSEY
Orig-A 18SEP14

40°17'N-74°49'W

TRENTON MERCER (TTN)

RNAV (RNP) Y RWY 24