

TACAN FOK Chan <b>47</b> (111.0)	APP CRS <b>063°</b>	Rwy Idg TDZE <b>57</b> Apt Elev <b>66</b>	<b>9002</b>
--	------------------------	---	-------------

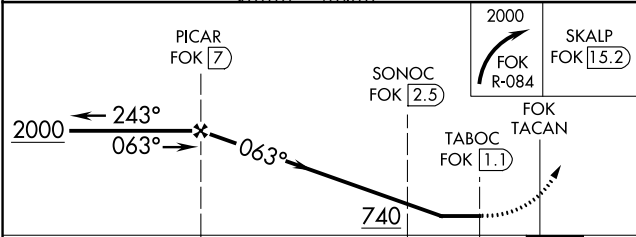
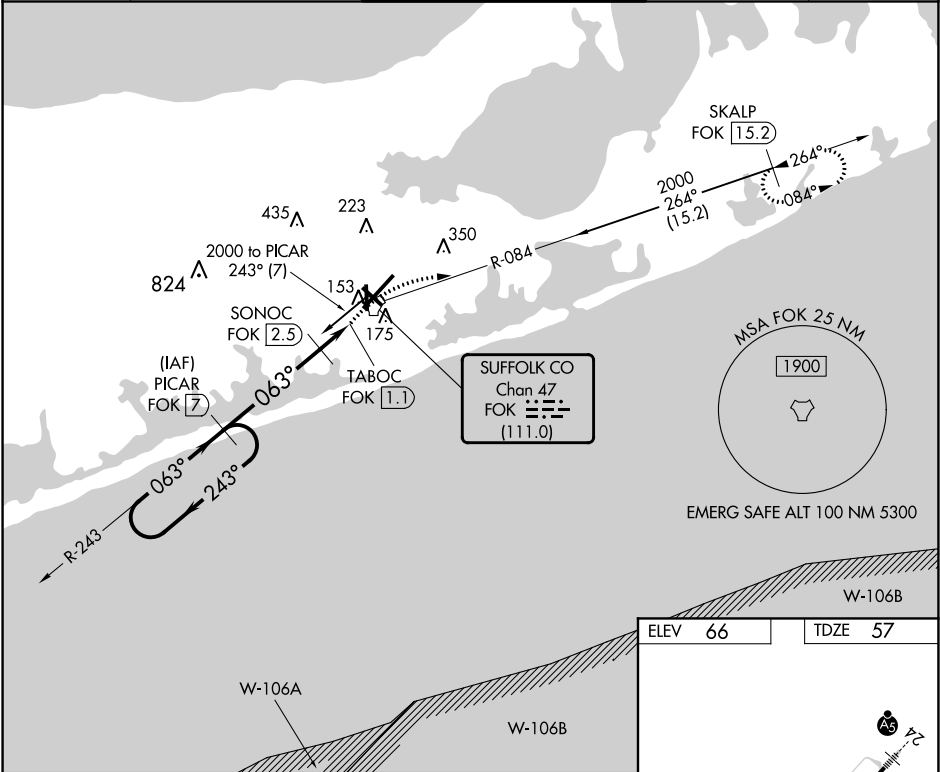
TACAN RWY 6  
FRANCIS S GABRESKI (F'OK)

**NA**

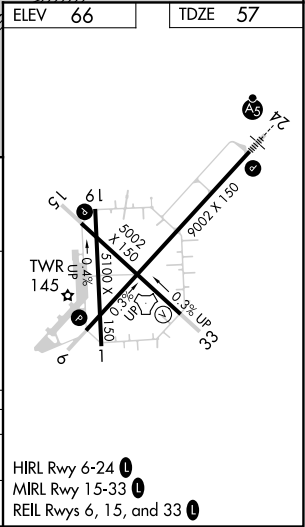
Helicopter visibility reduction below ¾ SM not authorized. When local altimeter setting not received, use Shirley altimeter setting and increase all MDA 40 feet and S-6 Cats C/D visibility to 1½ miles and Circling Cat D visibility to 2¼ miles. Circling Rwy 15 NA at night.

MISSED APPROACH: Climbing right turn to 2000 on FOK TACAN R-084 to SKALP/15.2 DME and hold.

ASOS <b>119.925</b>	NEW YORK APP CON <b>125.975 343.65</b>	SUFFOLK COUNTY TOWER ★ <b>125.3 (CTAF) 0 236.6</b>	GND CON <b>121.8 225.4</b>	UNICOM <b>122.95</b>
------------------------	---	---	-------------------------------	-------------------------



CATEGORY	A	B	C	D
S-6	420-1	363 (400-1)		
CIRCLING	600-1 534 (600-1)	620-1 554 (600-1)	620-1½ 554 (600-1½)	700-2 634 (700-2)



NE-2, 03 DEC 2020 to 31 DEC 2020

NE-2, 03 DEC 2020 to 31 DEC 2020