

WAAS
CH **77928**
W10B

APP CRS
102°

Rwy Idg **4255**
TDZE **55**
Apt Elev **55**

RNAV (GPS) X RWY 10

EAST HAMPTON (HTO)

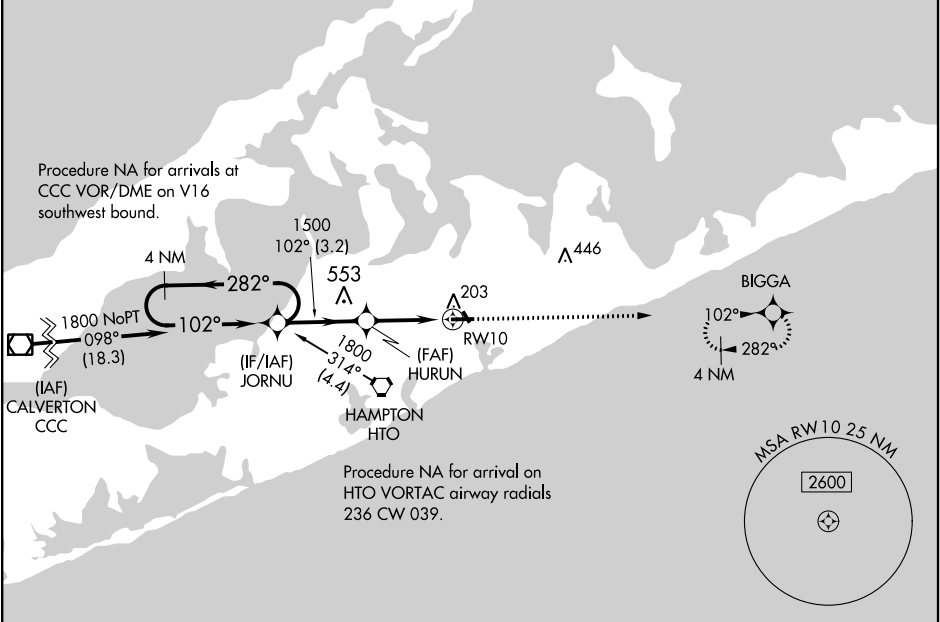
▼

NA

Baro-VNAV NA when using Westhampton Beach altimeter setting. For uncompensated Baro-VNAV systems, LNAV/VNAV NA below -15°C (5°F) or above 54°C (130°F). DME/DME RNP-0.3 NA. Helicopter visibility reduction below 1 SM NA. When local altimeter setting not received, use Westhampton Beach altimeter setting and increase all DA 45 feet and increase LPV and LNAV/VNAV visibility ½ mile. Night landing: Rwy 10, 28 operational VGSI required, remain on or above VGSI glidepath until threshold.

MISSED APPROACH:
Climb to 2000 direct BIGGA and hold.

AWOS-3PT 118.075	NEW YORK APP CON 125.975 343.65	EAST HAMPTON TOWER ★ 125.225 (CTAF) 0	GND CON 121.9	CLNC DEL 118.95
----------------------------	---	---	-------------------------	---------------------------



ELEV 55

TDZE 55

4 NM Holding Pattern

VGSI and RNAV glidepath not coincident (VGSI Angle 3.30/TCH 49).

2000 BIGGA

102° to RWY 10

GP 4.20° TCH 60

3.2 NM

3.1 NM

1800

282°

102°

JORNU

HURUN

1500

RWY 10

4255 X 100

0.5%

0.6% LPV

TWR

28

MIRL Rwy 10-28 0

REIL Rwy 10 and 28 0 *

CATEGORY	A	B	C	D
LPV DA	394-1 339 (400-1)		NA	
LNAV/VNAV DA	531-1 3/8 476 (500-1 3/8)		NA	