

WAAS CH <b>49037</b> <b>W28A</b>	APP CRS <b>282°</b>	Rwy Idg <b>4255</b> TDZE <b>46</b> Apt Elev <b>55</b>
--	------------------------	---

RNAV (GPS) Z RWY 28

EAST HAMPTON (HTO)

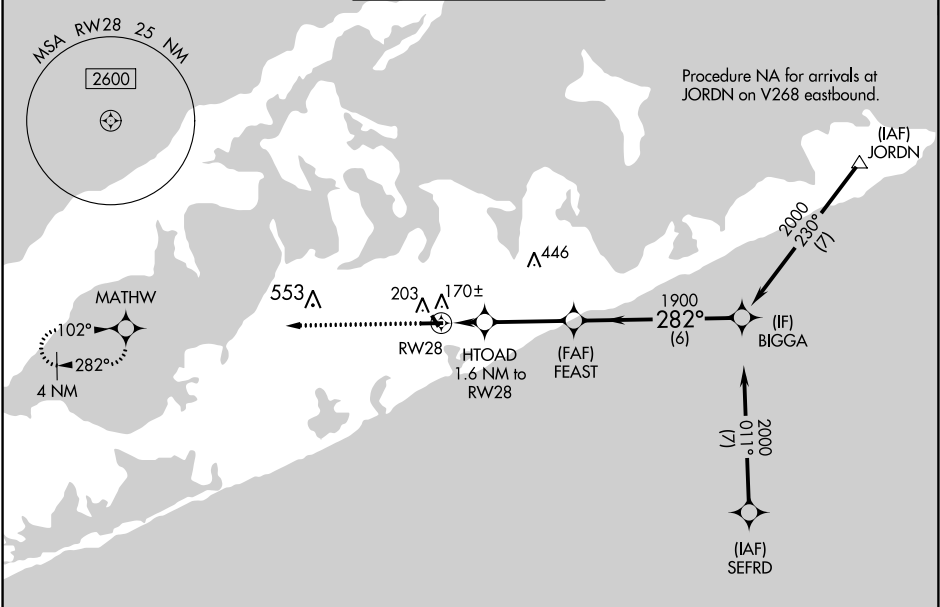
RNP APCH.

⚠

Circling to Rwy 16, 34 NA at night. Rwy 28 helicopter visibility reduction below 1 SM NA. For uncompensated Baro-VNAV systems, LNAV/VNAV NA below -15°C or above 48°C. Straight-in and Circling Rwy 28 at night operational VGSI required, remain at or above VGSI glidepath until threshold. Circling Rwy 10 at night operational VGSI required, remain on or above VGSI glidepath until threshold.

MISSED APPROACH:  
Climb to 2000 direct MATHW and hold.

AWOS-3PT <b>118.075</b>	NEW YORK APP CON <b>125.975 343.65</b>	EAST HAMPTON TOWER ★ <b>125.225 (CTAF) 0</b>	GND CON <b>121.9</b>	CLNC DEL <b>118.95</b>
----------------------------	---	---	-------------------------	---------------------------



ELEV <b>55</b>	TDZE <b>46</b>
----------------	----------------

2000

MATHW

VGSI and RNAV glidepath not coincident (VGSI Angle 3.00/TCH 54).

\* LNAV only

HTOAD 1.6 NM to RWY 28

FEAST 1900

BIGGA 2000

GP 3.58° TCH 60

CATEGORY	A	B	C	D
LPV DA	346-1	300 (300-1)		NA
LNAV/VNAV DA	356-1	310 (400-1)		NA
LNAV MDA	420-1	374 (400-1)		NA
CIRCLING	600-1	545 (600-1)	640-1½ 585 (600-1½)	NA