
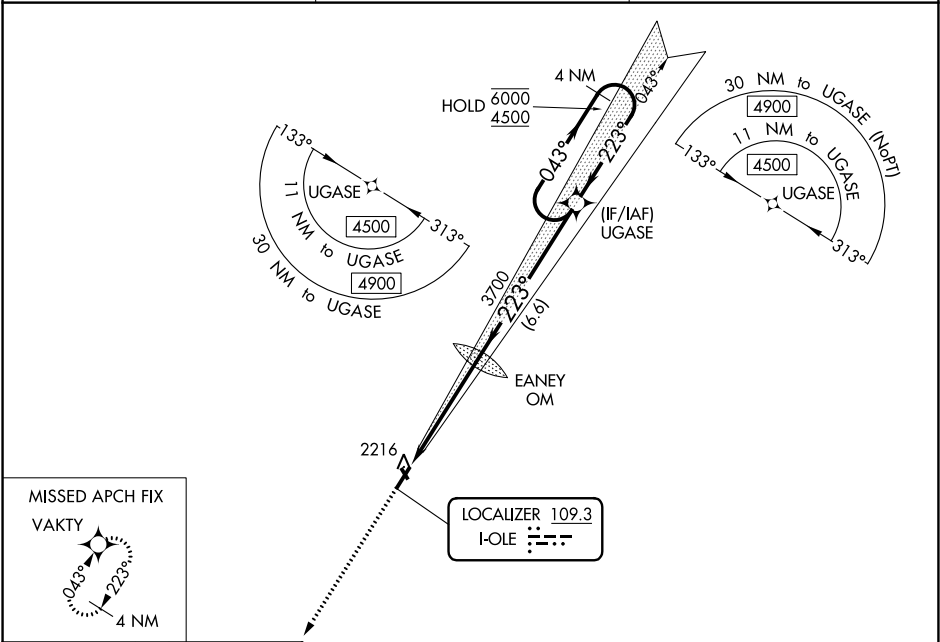


LOC I-OLE	APP CRS	Rwy Idg	4500
109.3	223°	TDZE	2132
		Apt Elev	2135

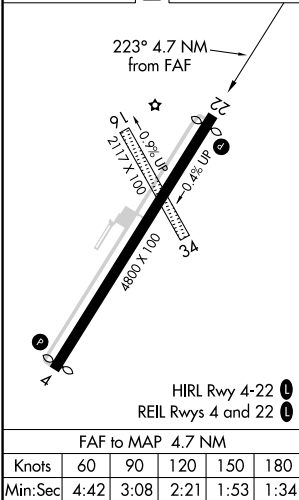
LOC RWY 22






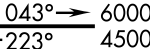

CATTARAUGUS COUNTY-OLEAN (OLE)

RNAV 1-GPS required.		MISSED APPROACH: Climb to 4900 direct VAKTY and hold.
	Circling NA to Rwys 16 and 34. When VGSI inop, Straight-in/Circling Rwy 22 procedure NA at night.	
AWOS-3	CLEVELAND CENTER	UNICOM
118.375	124.325 353.85	122.8 (CTAF) 1



ELEV 2135	D	TDZE 2132
-----------	---	-----------



4900		VAKTY		2758 ▲	
				UGASE 4 NM Holding Pattern	
					
4.7 NM		6.6 NM			
CATEGORY	A	B	C	D	
S-LOC 22	2580-1	448 (500-1)	2580-1 <sup>3</sup> / <sub>8</sub>	448 (500-1 <sup>3</sup> / <sub>8</sub> )	
 CIRCLING	2620-1	485 (500-1)	2680-1 <sup>1</sup> / <sub>2</sub> 545 (600-1 <sup>1</sup> / <sub>2</sub> )	2720-2 585 (600-2)	

NE-2, 03 DEC 2020 to 31 DEC 2020

NE-2, 03 DEC 2020 to 31 DEC 2020