

LOC I-GVQ 108.9	APP CRS 282°	Rwy Idg TDZE Apt Elev	5499 911 913
---------------------------	------------------------	-----------------------------	---

ILS or LOC RWY 28

GENESEE COUNTY (GVQ)

⚠

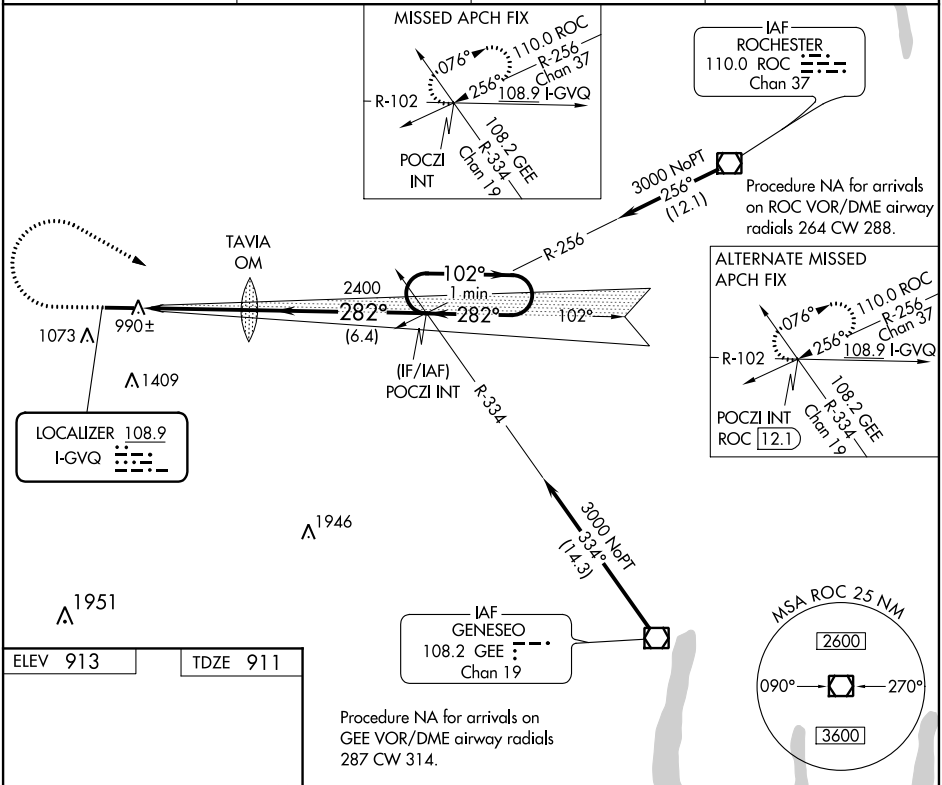
NA

When local altimeter setting not received, use Rochester altimeter setting and increase all DA 102 feet and all MDA 120 feet; increase S-LOC 28 Cats C/D and Circling Cat D visibility ¼ mile. Autopilot coupled approach NA below 1433.

MALSR

MISSED APPROACH: Climb to 1500 then climbing right turn to 3000 via heading 130° and I-GVQ east course to POCZI INT and hold.

AWOS-3PT 127.525	ROCHESTER APP CON 123.7 322.3	CLNC DEL 121.8	UNICOM 122.7 (CTAF) 0
----------------------------	---	--------------------------	--



1500	3000	I-GVQ E crs	POCZI INT	VGSI and ILS glidepath not coincident (VGSI Angle 3.00°/TCH 62).	One Minute Holding Pattern
hdg 130°					
2307	2400	TAVIA OM	POCZI INT	102° 3000	GS 3.00° TCH 56
4.2 NM	6.4 NM				
CATEGORY	A	B	C	D	
S-ILS 28	1111-½	200 (200-½)			
S-LOC 28	1260-½	349 (400-½)		1260-¾ 349 (400-¾)	
CIRCLING	1380-1	467 (500-1)	1380-1½ 467 (500-1½)	1480-2 567 (600-2)	