

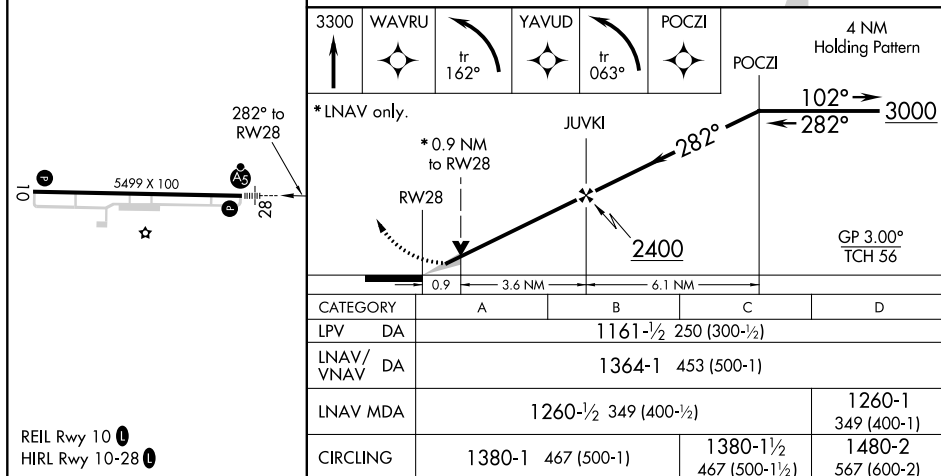
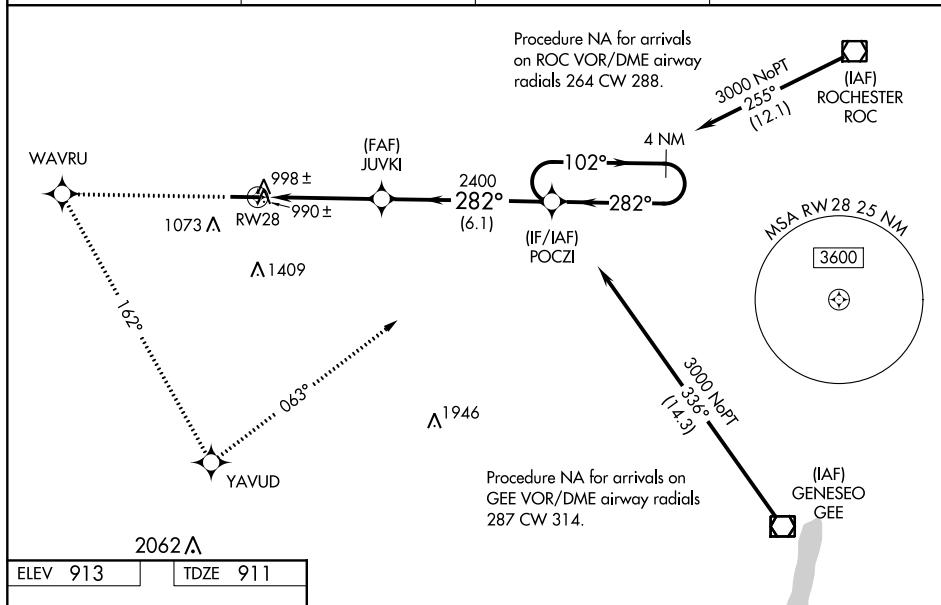


|  |                        |   |
|--|------------------------|---|
| WAAS<br>CH <b>86311</b><br><b>W28A</b> | APP CRS<br><b>282°</b> | Rwy Idg <b>5499</b><br>TDZE <b>911</b><br>Apt Elev <b>913</b> |
|--|------------------------|---|

RNAV (GPS) RWY 28  
GENESEE COUNTY (GVQ)

|   |  |  |  |
|---|--|--|--|
|  | <p>For uncompensated Baro-VNAV systems, LNAV/VNAV NA below -16°C (4°F) or above 46°C (114°F). DME/DME RNP-0.3 NA. When local altimeter setting not received, use Rochester altimeter setting and increase all DA 102 feet and all MDA 120 feet; increase LPV all Cats visibility ¼ mile, LNAV/VNAV all Cats visibility ½ mile, LNAV Cat C and Circling Cat D visibility ¼ mile. Baro-VNAV and VDP NA when using Rochester altimeter setting. For inoperative MALSR increase LNAV Cat D visibility to 1¼ mile. For inoperative MALSR, when using Rochester altimeter setting increase LPV visibility all Cats to 1¼ mile.</p> | <p>MALSR</p>  | <p>MISSED APPROACH: Climb to 3300 direct WAVRU and left turn via 162° track to YAVUD and left turn via 063° track to POCZI and hold.</p> |
| <p>AWOS-3PT<br/><b>127.525</b></p>  | <p>ROCHESTER APP CON<br/><b>123.7 322.3</b></p>  | <p>CLNC DEL<br/><b>121.8</b></p>   | <p>UNICOM<br/><b>122.7 (CTAF) 0</b></p>  |



RNAV (GPS) RWY 28