

WAAS CH <b>40412</b> <b>W33A</b>	APP CRS <b>329°</b>	Rwy Idg <b>4222</b> TDZE <b>67</b> Apt Elev <b>81</b>
--	------------------------	---

RNAV (GPS) RWY 33

BROOKHAVEN (HWV)

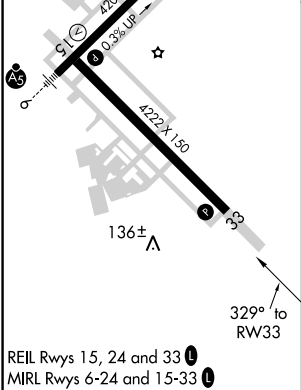
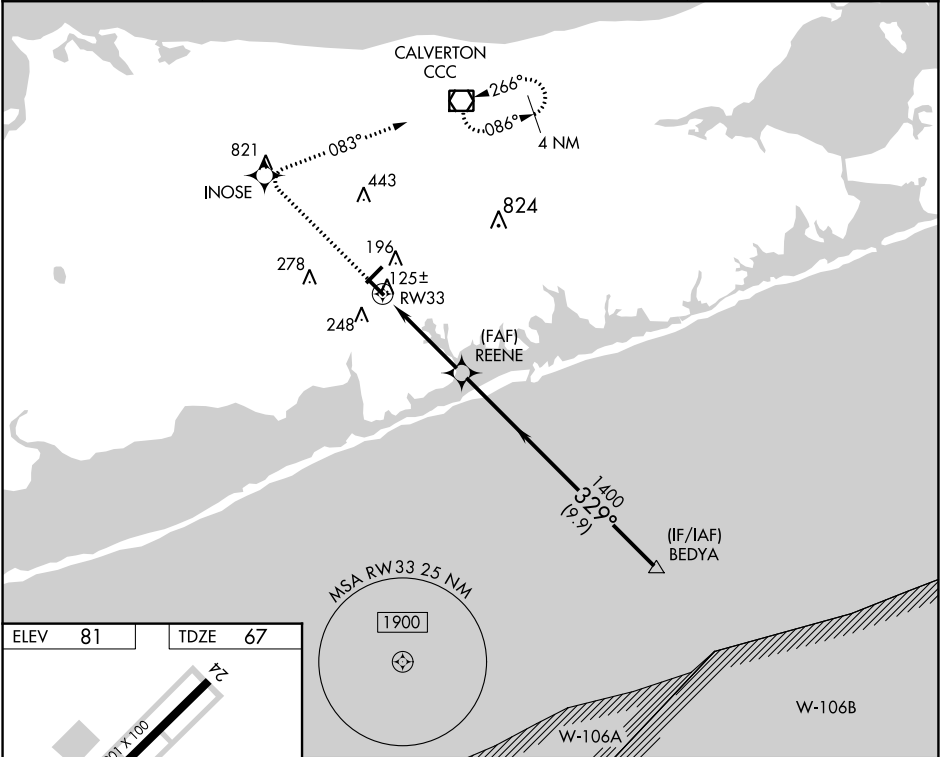
⚠

Baro-VNAV NA when using Islip altimeter setting. For uncompensated Baro-VNAV systems, LNAV/VNAV NA below -15°C (5°F) or above 54°C (130°F). DME/DME RNP-0.3 NA. When local altimeter setting not received, use Islip altimeter setting and increase all DA 28 feet and all MDA 40 feet, and increase LNAV/VNAV all Cats visibility ¼ mile. VDP NA when using Islip altimeter setting.

MISSED APPROACH:

Climb to 2000 direct INOSE and right turn via track 083° to CCC VOR/DME and hold.

ASOS <b>119.625</b>	NEW YORK APP CON <b>120.05 343.75</b>	CLNC DEL <b>133.2</b>	UNICOM <b>122.8 (CTAF) 0</b>
------------------------	--	--------------------------	---------------------------------



2000	INOSE	CCC	BEDYA	
↑	✱	tr 083° ☐	4000	
*LNAV only		*1.2 NM to RW33	REENE	Procedure Turn NA
RW33		1.2 NM	2.8 NM	GP 3.00° TCH 46
		1.2 NM	2.8 NM	9.9 NM
CATEGORY	A	B	C	D
LPV DA	346-1	279 (300-1)		NA
LNAV/VNAV DA	449-1¼	382 (400-1¼)		NA
LNAV MDA	500-1	433 (500-1)		NA
CIRCLING	560-1	479 (500-1)		NA