

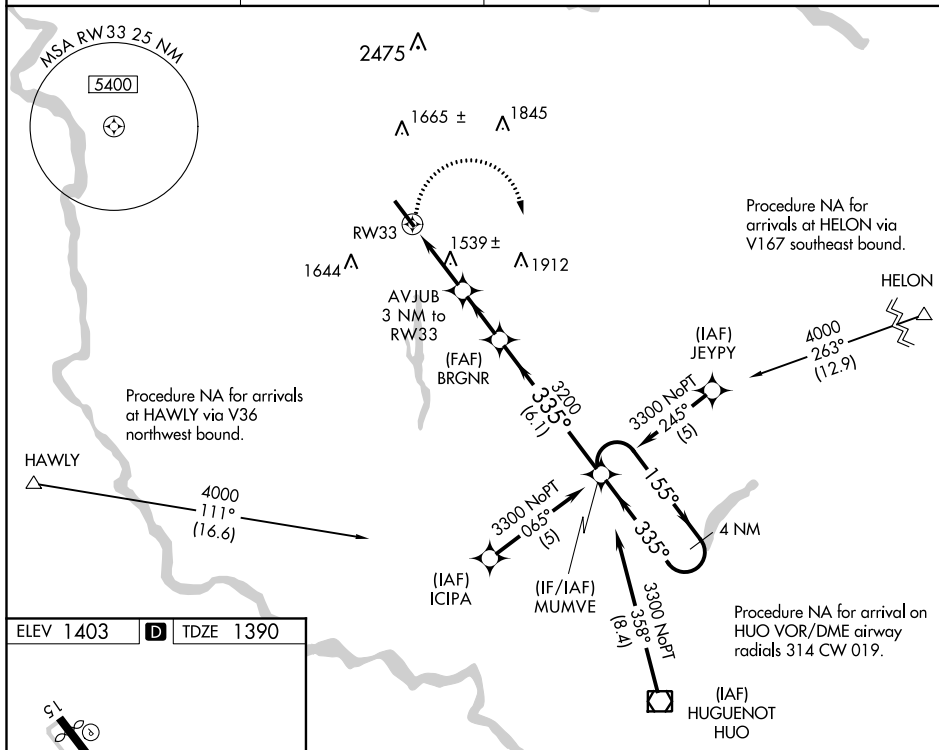
APP CRS	Rwy Ldg	5798
335°	TDZE	1390
	Apt Elev	1403

RNAV (GPS) RWY 33
SULLIVAN COUNTY INTL (MSV)

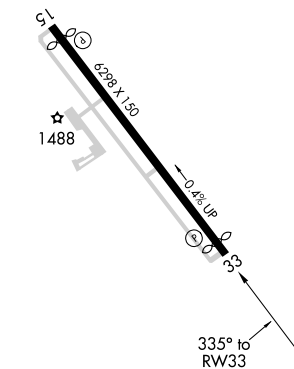
T DME/DME RNP-0.3 NA. When local altimeter setting not received, use Newburgh altimeter setting and increase all MDA 220 feet, increase LNAV Cats C/D and Circling Cat C visibility ½ mile, Circling Cat D visibility ¼ mile. VDP NA when using Newburgh altimeter setting.

MISSED APPROACH: Climbing right turn to 3300 direct MUMVE and hold.

AWOS-3PT
124.725

NEW YORK APP CON
132.75 363.1CLNC DEL
121.6UNICOM
122.8 (CTAF) **L**

ELEV 1403	D	TDZE 1390
-----------	----------	-----------



REIL Rwy 15 and 33 **L**
HIRL Rwy 15-33 **L**

3300 MUMVE VGSi and descent angles not coincident (VGSi Angle 3.00/TCH 39). 4 NM Holding Pattern

MUMVE

BRGNR

AVJUB 3 NM to RW33

1.2 NM to RW33

≤ 3.23° TCH 39

335° 3300

2400

1.2 NM 1.8 NM 2.2 NM 6.1 NM