

MT HOLLY, NEW JERSEY

AL-5871 (FAA)

20030

APP CRS <b>262°</b>	Rwy Idg TDZE Apt Elev	<b>3881</b> <b>53</b> <b>53</b>
------------------------	-----------------------------	---------------------------------------

RNAV (GPS) RWY 26  
SOUTH JERSEY RGNL (VAY)

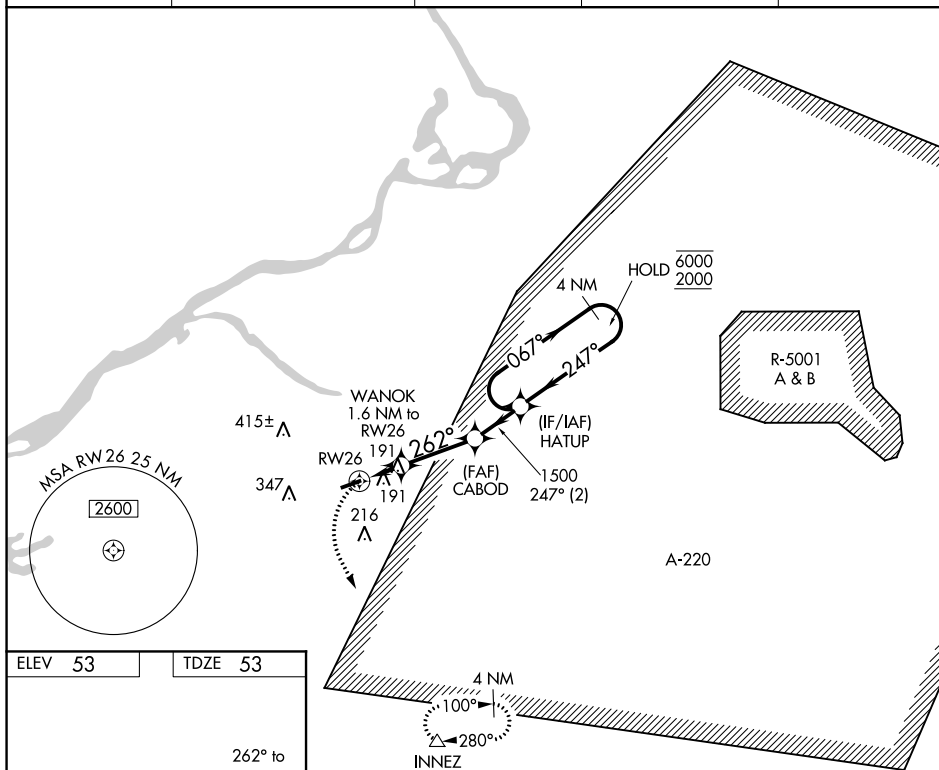
RNP APCH.

**T**

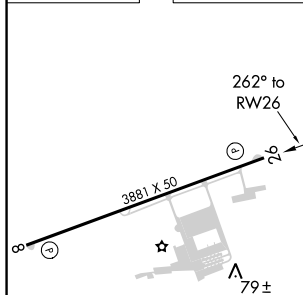
Rwy 26 helicopter visibility reduction below 1 SM NA. Procedure NA at night.

MISSED APPROACH:  
Climbing left turn to 2000  
direct INNEZ and hold.

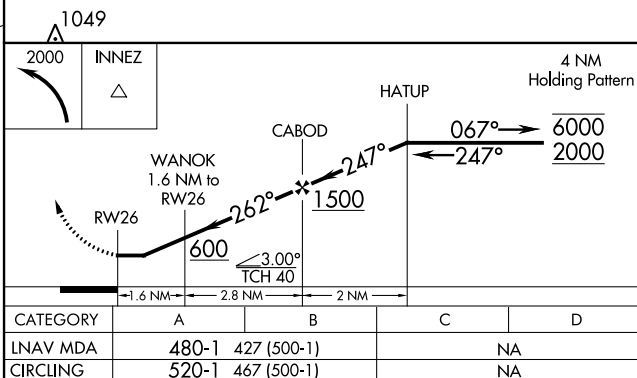
ASOS <b>119.325</b>	MC GUIRE APP CON <b>126.475 363.8</b>	GCO <b>121.725</b>	UNICOM <b>122.8</b> (CTAF)	<b>123.3 0</b>
------------------------	--	-----------------------	-------------------------------	----------------



ELEV 53		TDZE 53
---------	--	---------

MIRL Rwy 8-26 **L**

REIL Rwys 8 and 26 (L)



MT HOLLY, NEW JERSEY

Amdt 1C 08NOV18

39°57'N-74°51'W

SOUTH JERSEY RGNL (VAY)  
RNAV (GPS) RWY 26

NE-2, 03 DEC 2020 to 31 DEC 2020

NE-2, 03 DEC 2020 to 31 DEC 2020