

WAAS CH 97625 W36A	APP CRS 355°	Rwy Idg 5000 TDZE 1195 Apt Elev 1220
--	------------------------	---

RNAV (GPS) RWY 36

HORNELL MUNI (HTF)

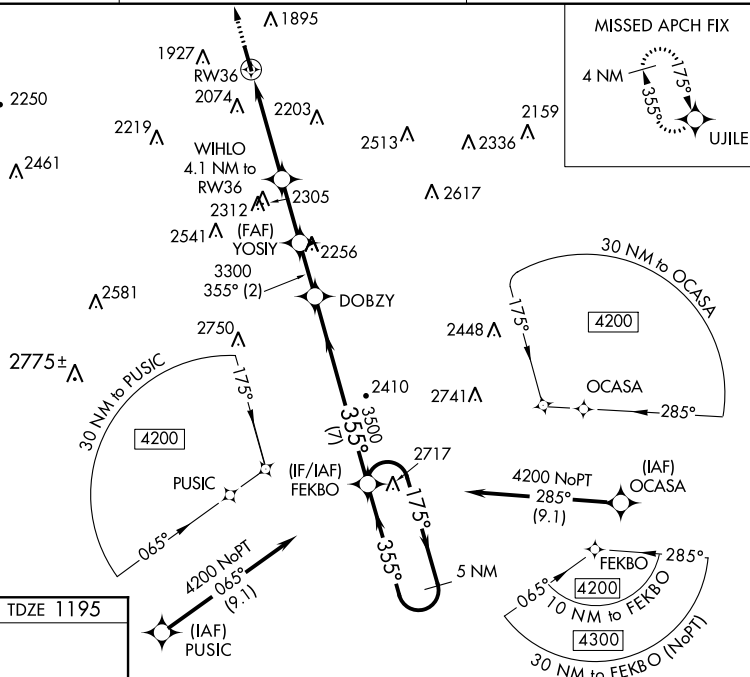
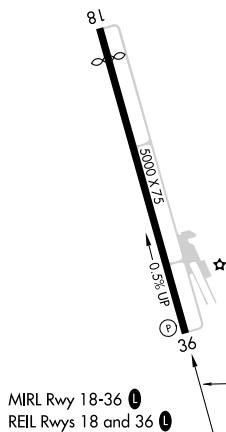
T Night landing: RWY 18 NA. For uncompensated Baro-VNAV systems, LNAV/VNAV NA below -17°C (2°F) or above 54°C (130°F). DME/DME RNP-0.3 NA. Helicopter visibility reduction below ¾ SM NA. When local altimeter setting not received, use Dansville altimeter setting and increase all DA 105 feet, all MDA 120 feet and LPV all Cats visibility ¾ mile, LNAV/VNAV all Cats visibility 1 mile, and LNAV Cat B visibility ¼ mile and Cat C visibility ½ mile. VDP and Baro-VNAV NA with Dansville altimeter setting.

MISSED APPROACH:
Climb to 3900 direct
VILE and hold

AWOS-3
118.475

CLEVELAND CENTER
124,325 353.85

UNICOM
122.7 (CTAF) **L**

ELEV 1220TDZE 1195

3900 ↑	UJILE ✦	WIHLO 4.1 NM to RW36 YOSIY 3300 DOBZY FEKBO 5 NM Holding Pattern 175° → 4200 ← 355°			
* LNAV only. * 2.8 NM to RW36 RW36		* 2540 3300 355° 3500 GP 3.00 TCH 50			
2.8 NM		1.3	2.4 NM	2 NM	7 NM
CATEGORY	A	B			C
LPV DA	1660-1½		465 (500-1½)		NA
LNAV/VNAV DA	2343-4		1148 (1200-4)		NA
LNAV MDA	2120-1¼	925 (900-1¼)		2120-2½ 925 (900-2½)	NA
CIRCLING	2360-1¼ 1140 (1200-1¼)	2360-1½ 1140 (1200-1½)		2440-3 1220 (1300-3)	NA