

WAAS CH 99507 W01A	APP CRS 009°	Rwy ldg TDZE Apt Elev	5499 990 990
--	------------------------	-----------------------------	---

RNAV (GPS) RWY 1

PENN YAN (P/O)

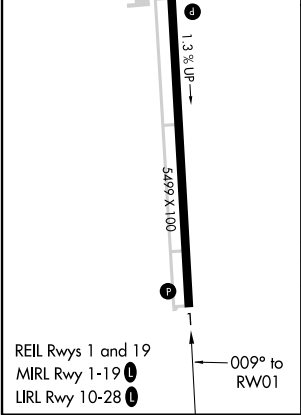
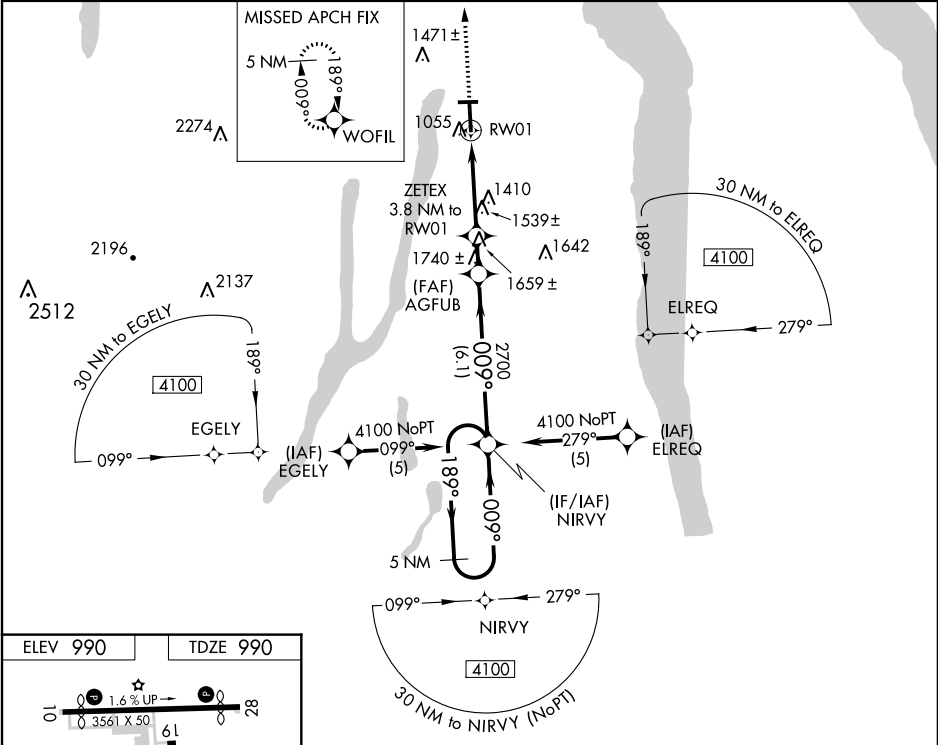
▼



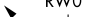
▲

When local altimeter setting not received, use Elmira altimeter setting and increase LPV DA 73 feet, all MDA 80 feet, LPV all Cats visibility ¼ mile, LNAV and Circling Cat A visibility ½ mile, and LNAV and Circling Cats C and D visibility ½ mile.
DME/DME RNP-0.3 NA. Helicopter visibility reduction below ¾ SM NA.

MISSED APPROACH:
Climb to 4000 direct
WOFIL and hold, continue
climb in hold to 4000.

ASOS 121.175	ELMIRA APP CON★ 124.3 257.8	UNICOM 123.0 (CTAF) 0
------------------------	---------------------------------------	---------------------------------



4000 ↑	WOFIL 	VGSI and RNAV glidepath not coincident (VGSI Angle 3.00/TCH 28).				5 NM Holding Pattern
*LNAV only.		ZETEX 3.8 NM to RW01	AGFUB 	NIRVY 009°	189°→	4100
		3.8 NM	1.4 NM	6.1 NM	GP 3.00° TCH 40	
CATEGORY	A	B	C	D		
LPV DA	1360-1¼ 370 (400-1¼)					
LNAV MDA	1800-1 810 (900-1)	1800-1¼ 810 (900-1¼)	1800-2¼ 810 (900-2¼)	1800-2½ 810 (900-2½)		
CIRCLING	1800-1 810 (900-1)	1800-1¼ 810 (900-1¼)	1800-2¼ 810 (900-2¼)	1800-2½ 810 (900-2½)		