

WAAS CH 78416 W28A	APP CRS 280°	Rwy Idg TDZE Apt Elev	3803 422 424
--	------------------------	-----------------------------	---

RNAV (GPS) RWY 28

WILLIAMSON-SODUS (SDC)

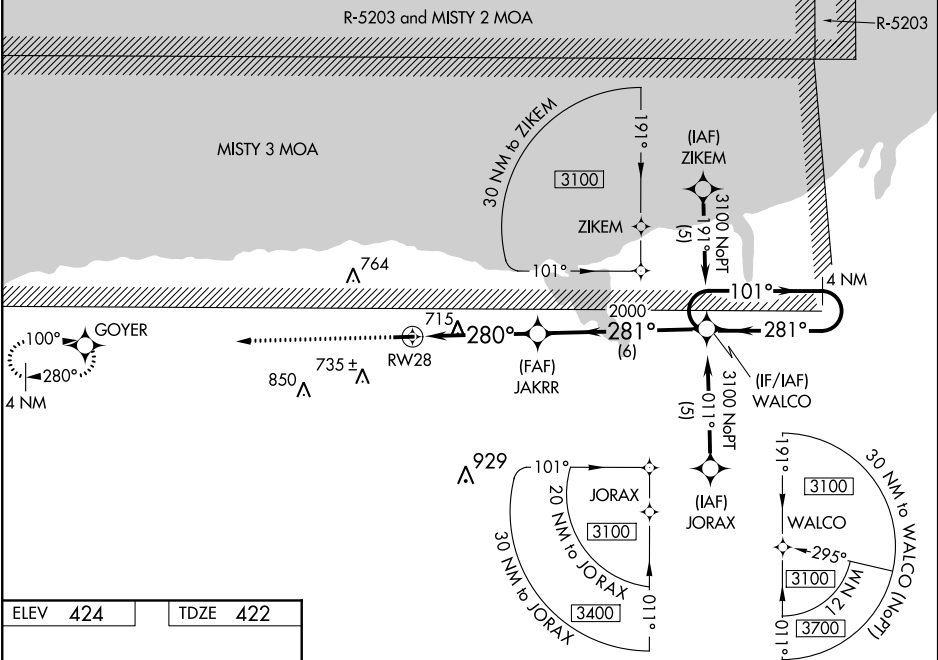
▼

△NA

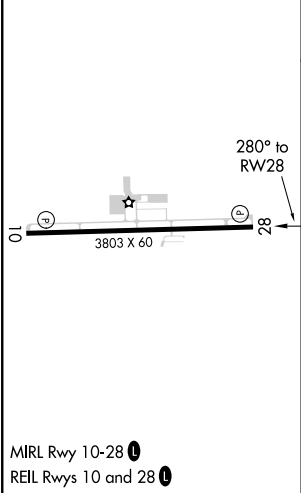
Baro-VNAV NA when using Rochester altimeter setting. For uncompensated Baro-VNAV systems, LNAV/VNAV NA below -15°C (5°F) or above 54°C (130°F). DME/DME RNP-0.3 NA. When VGSi inop, Straight-in and Circling Rwy 28 procedures NA at night. When VGSi inop, Circling Rwy 10 NA at night. Visibility reduction by helicopters NA. When local altimeter setting not received, use Rochester altimeter setting and increase LPV DA 148 feet, LNAV/VNAV DA 77 feet, all MDA 80 feet, LPV all Cats visibility ½ mile, LNAV/VNAV all Cats and LNAV Cat C visibility ¼ mile and Circling Cat C visibility ½ mile.

MISSED APPROACH: Climb to 3000 direct GOYER and hold.

AWOS-3 124.2	ROCHESTER APP CON 119.55 269.6	UNICOM 122.8 (CTAF) 0
------------------------	--	---------------------------------




ELEV 424	TDZE 422
-----------------	-----------------



3000

↑

GOYER



4 NM

Holding Pattern

WALCO

101° →

← 281°

3100

GP 3.20°

TCH 43

JAKRR

281°


2000

280°

4.5 NM

6 NM

RW28



CATEGORY	A	B	C	D
LPV DA	706-1 284 (300-1)			NA
LNAV/VNAV DA	1048-2 626 (700-2)			NA
LNAV MDA	980-1	558 (600-1)	980-1½ 558 (600-1½)	NA
CIRCLING	1000-1	576 (600-1)	1020-1½ 596 (600-1½)	NA