

APP CRS
192°

Rwy Idg
3304

TDZE
41

Apt Elev
41

RNAV (GPS) RWY 19

WOODBINE MUNI (OBI)

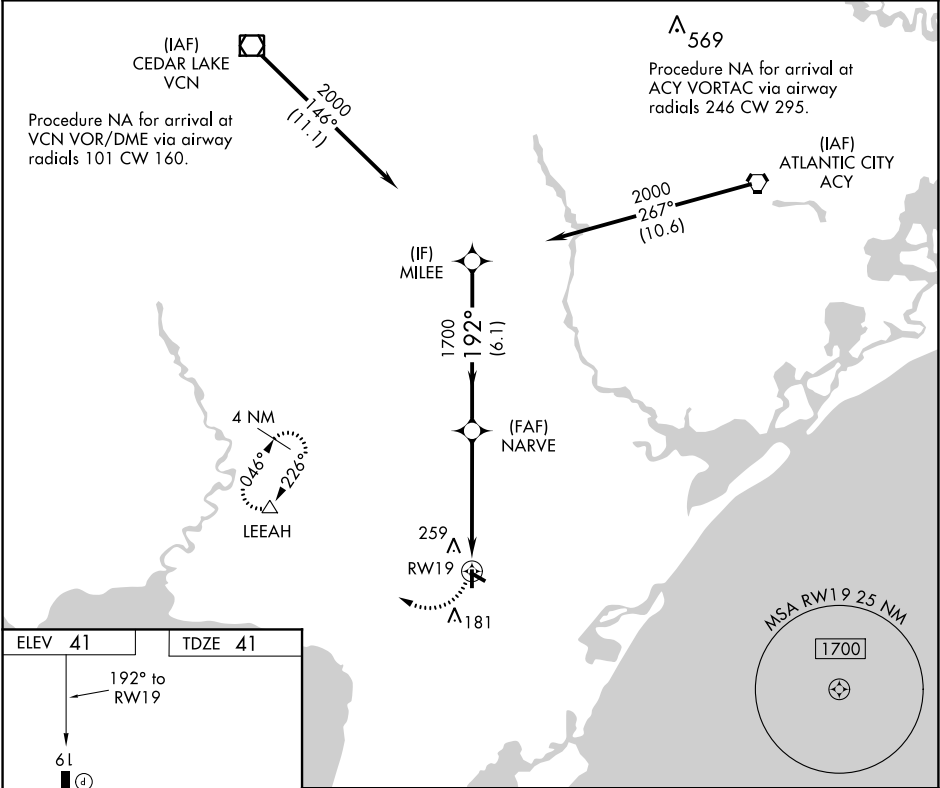
NA

NA

Rwy 19 Straight-in and Circling and Circling to Rwy 13, 31 NA at night. Rwy 13, 19, 31 helicopter visibility reduction below 1 SM NA. DME/DME RNP-0.3 NA. When local altimeter setting not received, use Millville Muni altimeter setting; increase all MDA 60 feet, and increase LNAV Cat C visibility ¼ mile.

MISSED APPROACH: Climbing right turn to 2000 direct LEEAH and hold.

AWOS-3 120.475	ATLANTIC CITY APP CON 124.6 327.125	GCO 121.725	UNICOM 123.05 (CTAF) 0
-------------------	--	----------------	---------------------------



ELEV 41

TDZE 41

192° to RWY 19

61

13

3304 X 75

3074 X 75

0.5% UP

REIL Rwy 19 and 31

MIRL Rwy 1-19 and 13-31 0

2000

LEEAH

Visual Segment - Obstacles.

MILEE

NARVE

1700

192°

2000

5 NM

6.1 NM

CATEGORY	A	B	C	D
LNAV MDA	500-1	459 (500-1)	500-1¼ 459 (500-1¼)	NA
CIRCLING	620-1	579 (600-1)	620-1½ 579 (600-1½)	NA