

WAAS CH <b>82206</b> <b>W15A</b>	APP CRS <b>147°</b>	Rwy Idg <b>11821</b> TDZE <b>504</b> Apt Elev <b>504</b>
--	------------------------	--

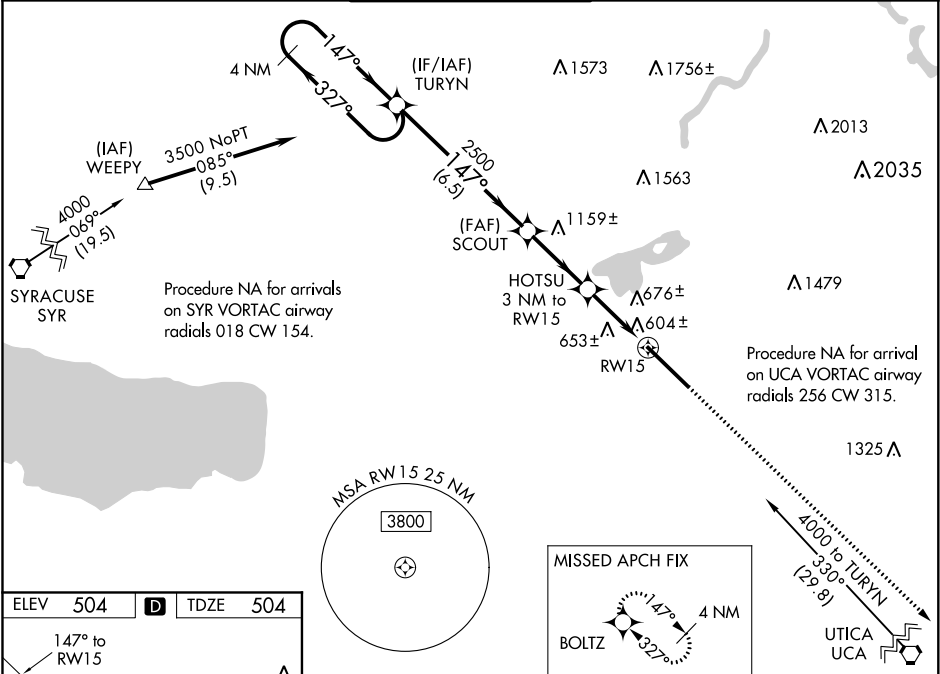
RNAV (GPS) RWY 15

GRIFFISS INTL (RME)

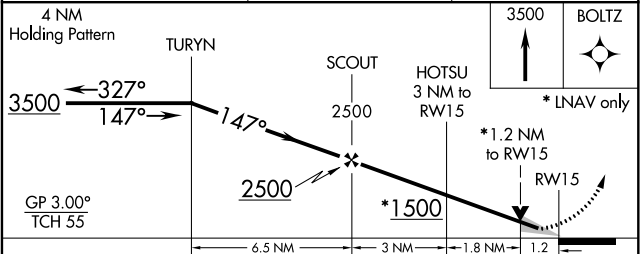
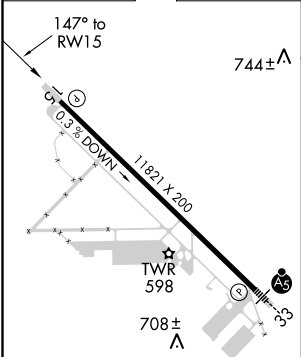
▼ For uncompensated Baro-VNAV systems, LNAV/VNAV NA below -16°C (4°F) or above 48°C (118°F). DME/DME RNP-0.3 NA. When local altimeter setting not received, use Syracuse altimeter setting and increase all DA 100 feet and all MDA 100 feet. Increase LNAV/VNAV all Cats, LNAV Cats C and D and Circling Cats B visibility ¼ mile; Circling Cats C and D visibility ½ mile. Baro-VNAV and VDP NA when using Syracuse altimeter setting. Circling NA west of Rwy 15-33.

MISSED APPROACH: Climb to 3500 direct BOLTZ and hold.

ATIS <b>118.7</b>	SYRACUSE APP CON <b>127.425 290.45</b>	GRIFFISS TOWER ★ <b>118.1 (CTAF) 0 291.7</b>	GND CON <b>121.9</b>	UNICOM <b>122.95</b>
----------------------	---	---	-------------------------	-------------------------



ELEV <b>504</b>	<b>D</b>	TDZE <b>504</b>
-----------------	----------	-----------------



CATEGORY	A	B	C	D
LPV DA	704-1 200 (200-1)			
LNAV/VNAV DA	1052-2 548 (600-2)			
LNAV MDA	940-1 436 (500-1)	940-1 ¼ 436 (500-1 ¼)	940-1 ½ 436 (500-1 ½)	940-1 ½ 436 (500-1 ½)
CIRCLING	1140-1 636 (700-1)	1200-1 696 (700-1)	1220-2 716 (800-2)	1300-2 ½ 796 (800-2 ½)

NE-2, 03 DEC 2020 to 31 DEC 2020

NE-2, 03 DEC 2020 to 31 DEC 2020