
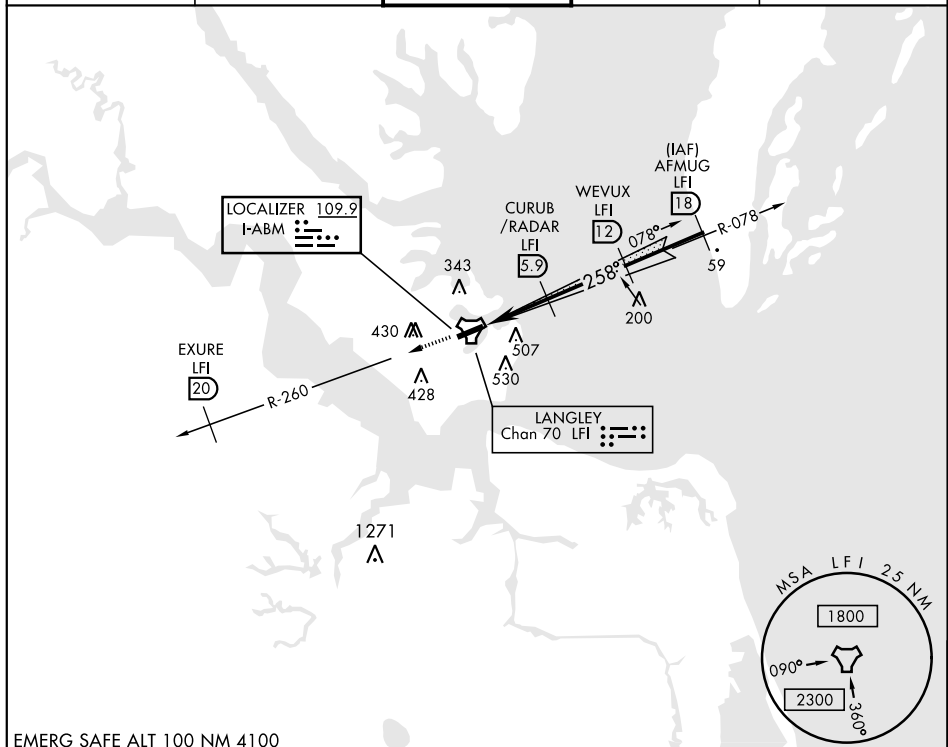
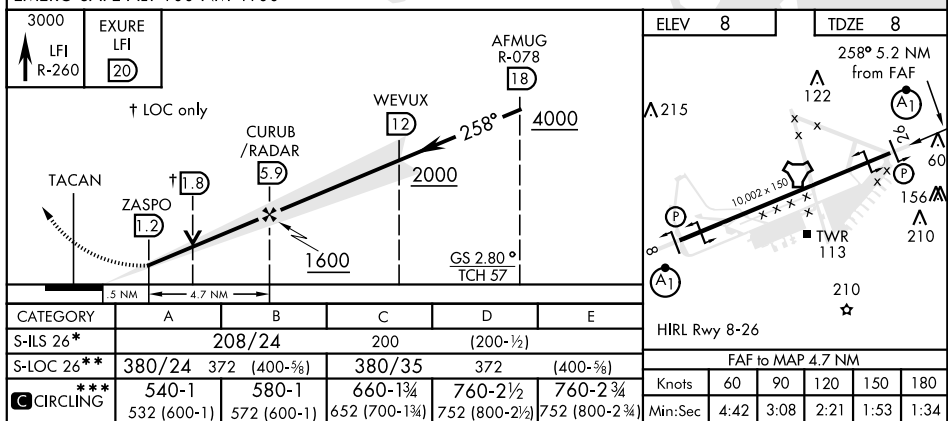


ILS or LOC Y RWY 26

LOC 1-ABM <u>109.9</u>	APCH CRS 258°	Rwy Idg 10,002 TDZE Arprt Elev 8	JAL-185 [USAF]	LANGLEY AFB (KLFI)
RADAR or DME Required.			ALSF-1 	MISSED APPROACH: Climb to 3000 via LFI R-260 to 20 DME (EXURE), then as instructed by ATC.
▼ ** When ALS inop, increase RVR to 40 and vis to $\frac{3}{4}$ miles. *** When ALS inop, increase RVR to 55 and vis to $\frac{1}{2}$ miles. *** Circling S of Rwy 8-26 not authorized.				
ATIS ★ 270.1	NORFOLK APP CON 125.7 335.625	LANGLEY TOWER ★ 125.0 253.5	GND CON 121.7 275.8	CLNC DEL 118.85 257.625



EMERG SAFE ALT 100 NM 4100



HAMPTON, VIRGINIA

37°05'N-76°21'W

LANGLEY AFB (KLFI)

Amdt 6 08OCT20

ILS or LOC Y RWY 26

NE-3, 03 DEC 2020 to 31 DEC 2020