

NORFOLK, VIRGINIA

RNAV (GPS) RWY 10

APCH CRS	Rwy Idg	8071
100°	TDZE	14
	Arpt Elev	15

AL-290 [USN]

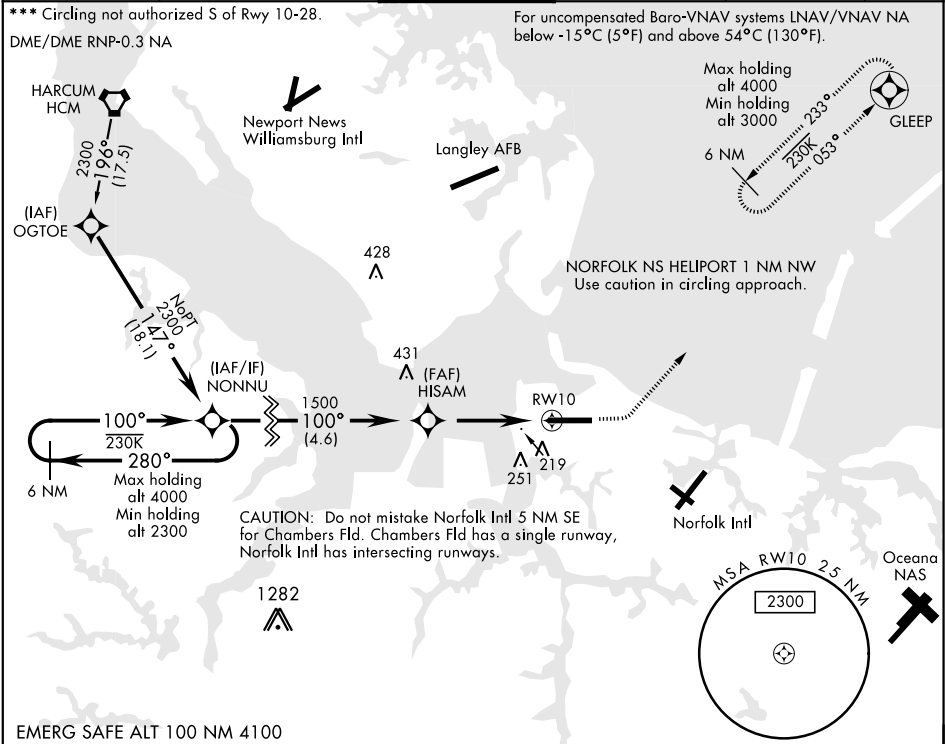
NORFOLK NS (CHAMBERS FIELD) (KNGU)

▼ * When ALS inop, increase vis to 1½ miles.
** When ALS inop, increase CAT AB vis to 1 mile, CAT CDE vis to 1½ miles.

ALSF-2

MISSED APPROACH: Climb to 800 then climbing left turn to 3000 direct GLEEP and hold.

ATIS 118.425 342.0	NORFOLK APP CON 118.9 353.7	CHAMBERS TOWER 124.3 379.15	GND CON 121.8 370.85	CLNC DEL 120.7 339.8	ASR/PAR
-----------------------	--------------------------------	--------------------------------	-------------------------	-------------------------	---------



VGSI and RNAV GP not coincident with VGSI 3.00/TCH 35.

NONNU

GP 3.00° TCH 50

HISAM

RW10

4.5 NM

1.4 NM to RW10

GLEEP

↑ LNAV only

CATEGORY	A	B	C	D	E
LNAV/VNAV DA *	500-1		486	(500-1)	
LNAV MDA **	500-½ 486 (500-½)		500- 1 486 (500-1)		
CIRCLING ***	500-1 485 (500-1)	560-1 545 (600-1)	560-1½ 545 (600-1½)	580-2 565 (600-2)	700-2½ 685 (700-2½)

ELEV 15

TDZE 14

Rwy 10 Idg 8071'

Rwy 28 Idg 7375'

NORFOLK NS Heliport

162 175 112 68 168

8370 x 200'

TWR 131

163

HIRL Rwy 10-28

REIL Rwy 10-28

TDZL/CL Rwy 10-28

NORFOLK, VIRGINIA
Amdt 6 26MAR20

36°56'N-76°17'W

NORFOLK NS (CHAMBERS FIELD) (KNGU)

RNAV (GPS) RWY 10

NE-3, 03 DEC 2020 to 31 DEC 2020

NE-3, 03 DEC 2020 to 31 DEC 2020