

TACAN RWY 10

TACAN NGU Chan 86(Y)	APCH CRS 097°	Rwy Idg TDZE Arpt Elev	8071 14 15
--------------------------------	-------------------------	------------------------------	---------------------------------------

AL-290 [USN]

NORFOLK NS (CHAMBERS FIELD) (KNGU)

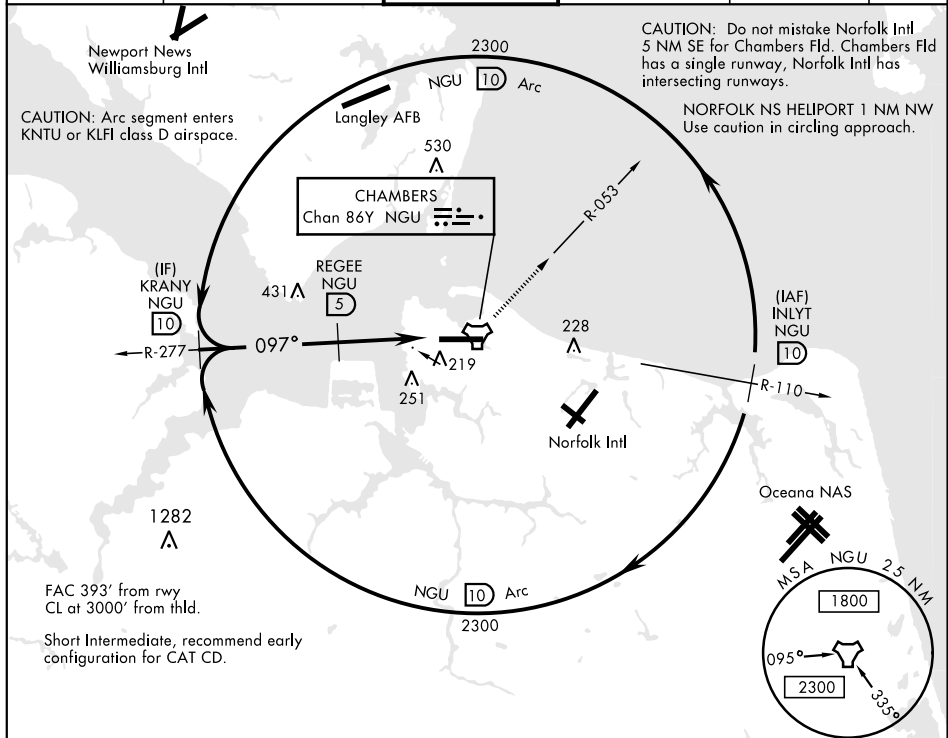
▼ * When ALS inop, increase CAT AB vis to 1 mile,
CAT CD vis to 1½ miles.
** Circling not authorized S of Rwy 10-28.

ALSF-2



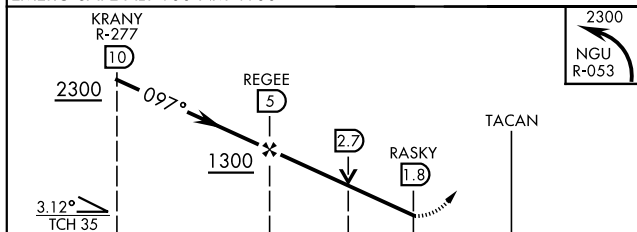
MISSED APPROACH: Climbing left turn to 2300 on
NGU TACAN R-053 then as directed by ATC.

ATIS 118.425 342.0	NORFOLK APP CON 118.9 353.7	CHAMBERS TOWER 124.3 379.15	GND CON 121.8 370.85	CLNC DEL 120.7 339.8	ASR/PAR
------------------------------	---------------------------------------	---------------------------------------	--------------------------------	--------------------------------	---------

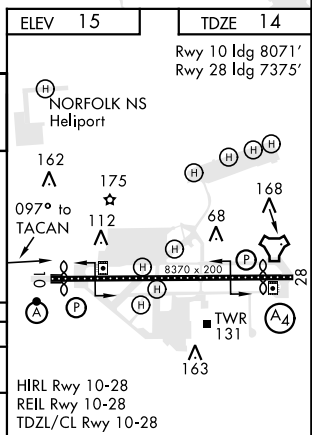


RADAR REQUIRED

EMERG SAFE ALT 100 NM 4100



CATEGORY	A	B	C	D
S-10*	520-½	506 (600-½)	520-1	506 (600-1)
CIRCLING**	520-1 505 (600-1)	560-1 545 (600-1)	560-1½ 545 (600-½)	580-2 565 (600-2)



NORFOLK, VIRGINIA

36°56'N-76°17'W

NORFOLK NS (CHAMBERS FIELD) (KNGU)

Amtd 4 26MAR20

TACAN RWY 10