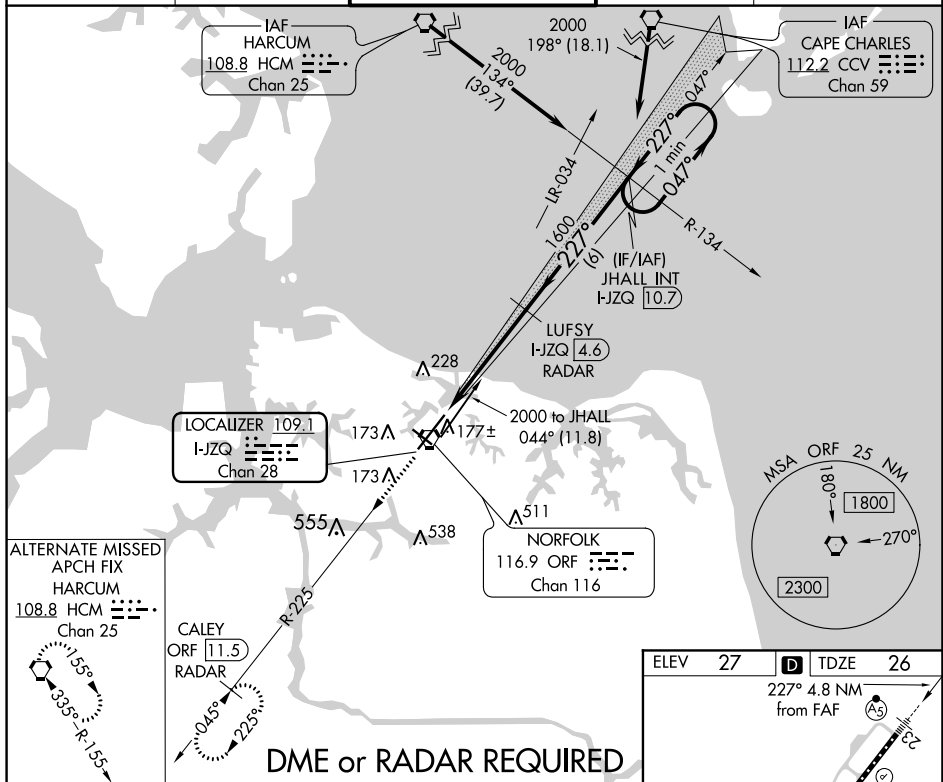


ILS or LOC RWY 23
NORFOLK INTL (ORF)

MISSED APPROACH: Climb to 2000 on ORF VORTAC R-225 to CALEY/ORF 11.5 DME/RADAR and hold.

ATIS 127.15	NORFOLK APP CON 118.9 353.7	NORFOLK TOWER 120.8 257.8	GND CON 121.9	CLNC DEL 118.5
----------------	--------------------------------	------------------------------	------------------	-------------------



2000 ↑	ORF R-225	CALEY ORF 11.5 RADAR				One Minute Holding Pattern
*LOC only		I-JZQ DME ANTENNA I-JZQ 0.2	*I-JZQ 1.1	1600 LUFSY I-JZQ 4.6 RADAR	227° → 047° → 2000 ← 227°	GS 3.00° TCH 55
CATEGORY	A		B		C	D
S-ILS 23	226-1/2 200 (200-1/2)					
S-LOC 23	460-1/2 434 (500-1/2)		460-3/4 434 (500-3/4)			
C CIRCLING	480-1 453 (500-1)		540-1 513 (600-1)		540-11/2 513 (600-11/2)	
	900-23/4 873 (900-23/4)					

