

PATUXENT RIVER, MARYLAND

HI-TACAN RWY 14

TACAN NHK Chan 39 (Y)	APCH CRS 147°	Rwy ldg TDZE Arpt Elev	9732 27 39
--------------------------	------------------	------------------------------	------------------

JAL-314 (USN) PATUXENT RIVER NAS (TRAPNELL FLD) (KNHK)

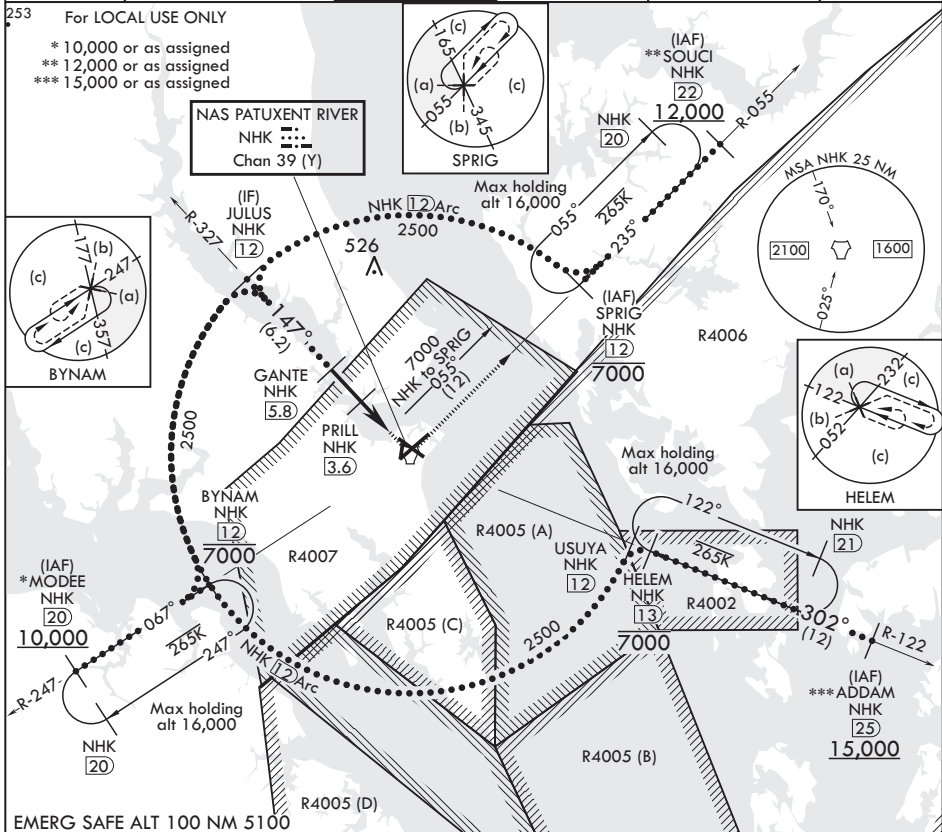
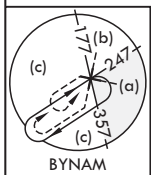
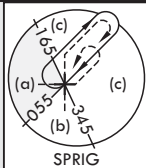
MISSED APPROACH: Climb to 500, then climbing left turn to 2500 on NHK TACAN R-055 to SPRIG and hold.

ATIS 322.425	APP CON/DEP CON 121.0 250.3	TOWER 123.7 343.65	GND CON 120.6 336.4	CLNC DEL 135.2 316.125	ASR/PAR
-----------------	--------------------------------	-----------------------	------------------------	---------------------------	---------

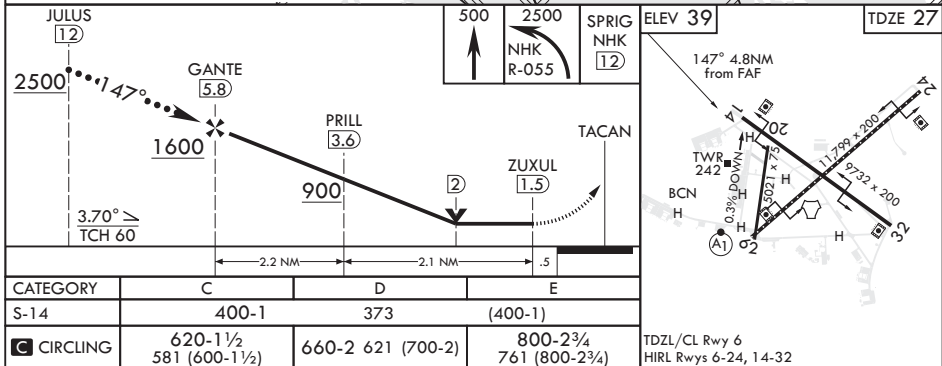
253 For LOCAL USE ONLY

- * 10,000 or as assigned
** 12,000 or as assigned
*** 15,000 or as assigned

NAS PATUXENT RIVER
NHK
Chan 39 (Y)



EMERG SAFE ALT 100 NM 5100



PATUXENT RIVER, MARYLAND

38°17'N - 76°25'W PATUXENT RIVER NAS (TRAPNELL FLD) (KNHK)

Amdt 1 25MAY17

HI-TACAN RWY 14