

PATUXENT RIVER, MARYLAND

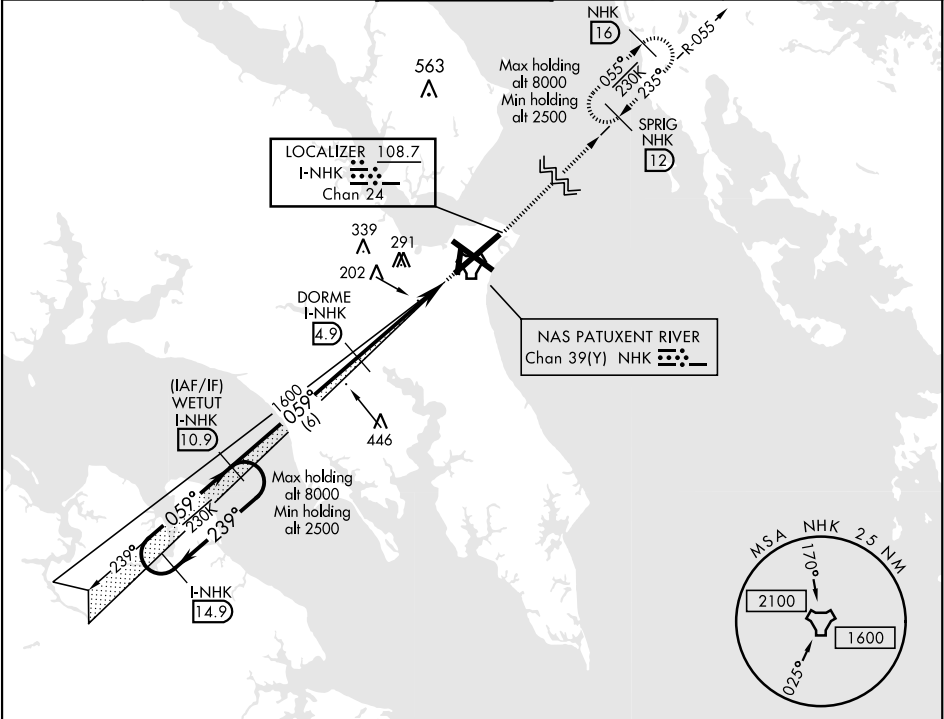
ILS RWY 6

LOC/DME I-NHK 108.7 Chan 24	APCH CRS 059°	Rwy ldg 11,799 TDZE 39 Arpt Elev 39
---	-------------------------	--

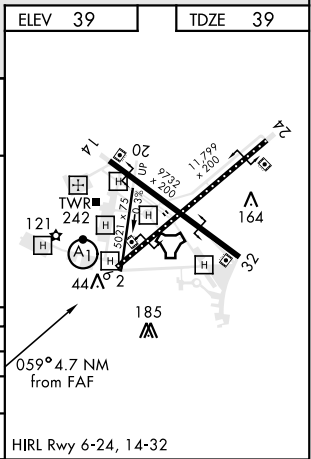
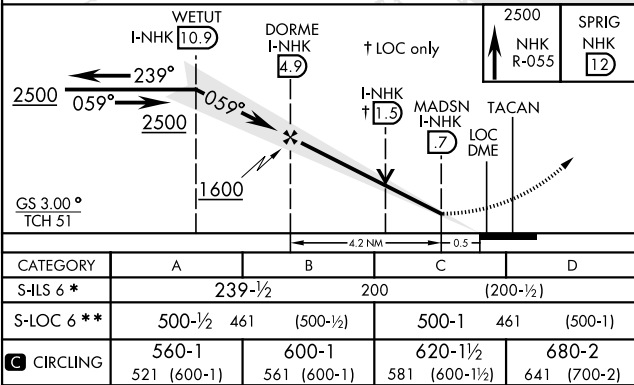
AL-314 [USN] PATUXENT RIVER NAS (TRAPNELL FIELD) (KNHK)

▽ * When ALS inop, increase vis to ¾ mile. ** When ALS inop, increase CAT AB vis to 1 mile; CAT CD vis to 1½ miles.	ALS-F-1 	MISSED APPROACH: Climb to 2500 to join NHK TACAN R-055 direct SPRIG and hold.
--	-------------	---

ATIS 322.425	PATUXENT APP/DEP CON 121.0 250.3	PATUXENT TOWER 123.7 343.65	GND CON 120.6 336.4	CLNC DEL 135.2 316.125	ASR/PAR
------------------------	--	---------------------------------------	-------------------------------	----------------------------------	---------



EMERG SAFE ALT 100 NM 5100



PATUXENT RIVER, MARYLAND

38° 17' N-76° 25' W

PATUXENT RIVER NAS (TRAPNELL FIELD) (KNHK)

Orig 21MAY20

ILS RWY 6

NE-3, 03 DEC 2020 to 31 DEC 2020

NE-3, 03 DEC 2020 to 31 DEC 2020