

PATUXENT RIVER, MARYLAND

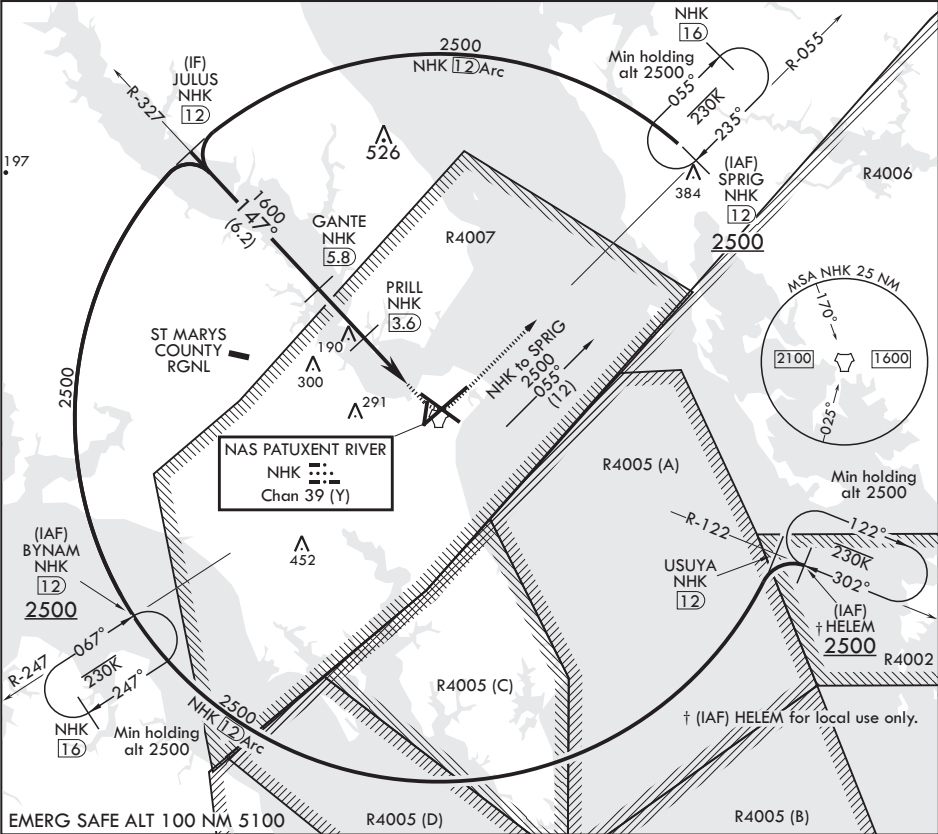
TACAN RWY 14

TACAN NHK Chan 39 (Y)	APCH CRS 147°	Rwy ldg TDZE Arpt Elev 39
--------------------------	------------------	------------------------------------

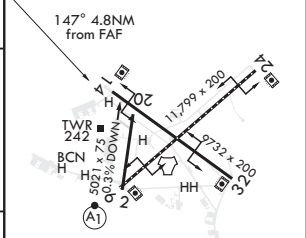
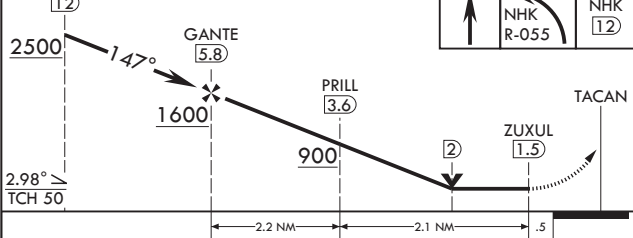
AL-314 (USN) PATUXENT RIVER NAS (TRAPNELL FLD) (KNHK)

▼	MISSED APPROACH: Climb to 500, then climbing left turn to 2500 on NHK TACAN R-055 to SPRIG and hold.
----------	--

ATIS 322.425	APP CON/DEP CON 121.0 250.3	TOWER 123.7 343.65	GND CON 120.6 336.4	CLNC DEL 135.2 316.125	ASR/PAR
-----------------	--------------------------------	-----------------------	------------------------	---------------------------	---------



JULUS 12	500	2500	SPRIG NHK 12	ELEV 39	TDZE 27
----------	-----	------	--------------	---------	---------



CATEGORY	A	B	C	D
S-14	400-1	373	(400-1)	
CIRCLING	560-1 521 (600-1)	600-1 561 (600-1)	620-1 1/2 581 (600-1 1/2)	660-2 621 (700-2)

TDZL/CL Rwy 6
HIRL Rwy 6-24, 14-32

PATUXENT RIVER, MARYLAND

38°17'N - 76°25'W PATUXENT RIVER NAS (TRAPNELL FLD) (KNHK)

Amdt 1 25MAY17

TACAN RWY 14

NE-3, 03 DEC 2020 to 31 DEC 2020

NE-3, 03 DEC 2020 to 31 DEC 2020