

PATUXENT RIVER, MARYLAND

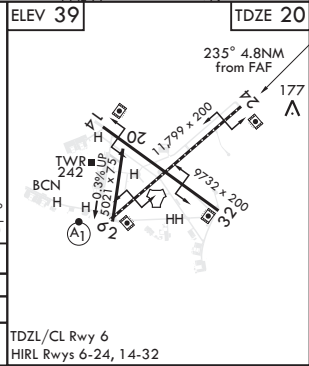
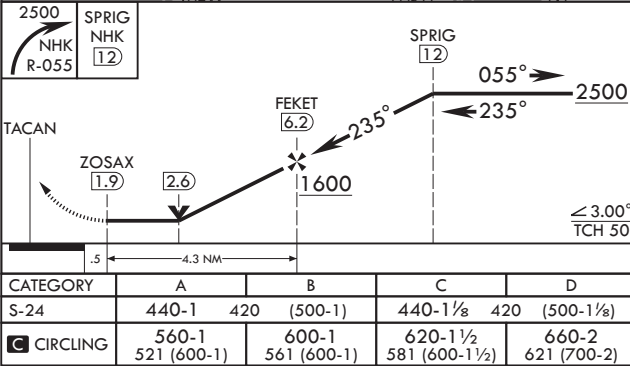
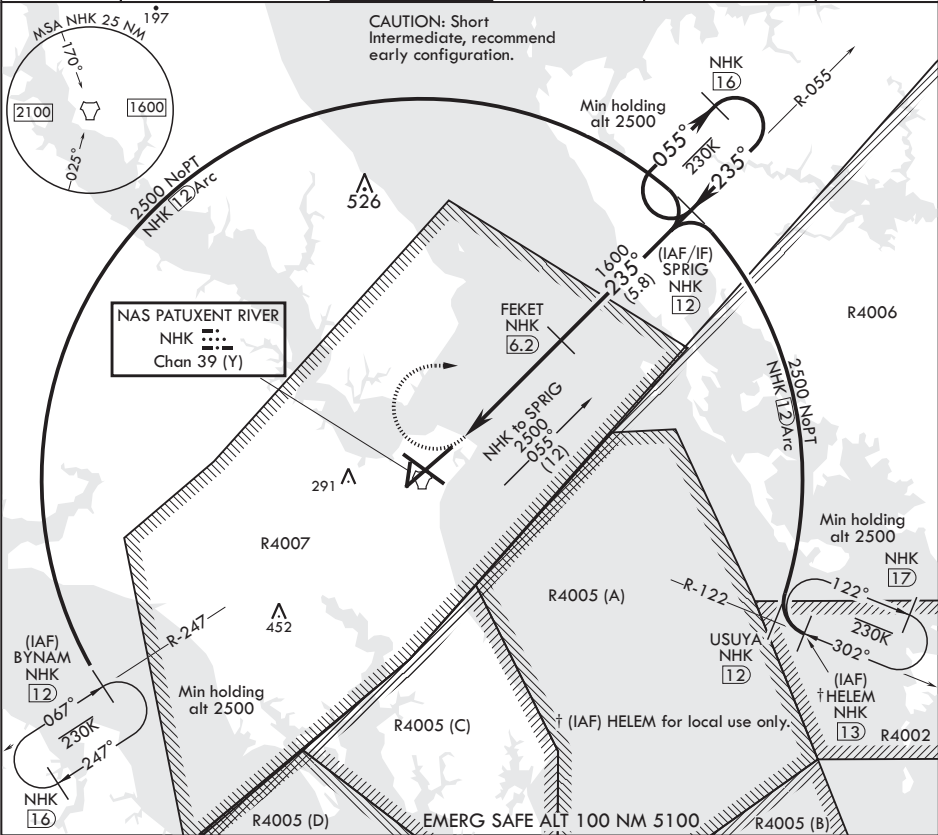
TACAN RWY 24

TACAN NHK Chan 39 (Y)	APCH CRS 235°	Rwy ldg TDZE Arpt Elev	11,799 20 39
--------------------------	------------------	------------------------------	--------------------

AL-314 (USN) PATUXENT RIVER NAS (TRAPNELL FLD) (KNHK)

	MISSED APPROACH: Climbing right turn to 2500, intercept NHK TACAN R-055 to SPRIG and hold.
--	--

ATIS 322.425	APP CON/DEP CON 121.0 250.3	TOWER 123.7 343.65	GND CON 120.6 336.4	CLNC DEL 135.2 316.125	ASR/PAR
-----------------	--------------------------------	-----------------------	------------------------	---------------------------	---------



PATUXENT RIVER, MARYLAND

38°17'N - 76°25'W PATUXENT RIVER NAS (TRAPNELL FLD) (KNHK)

Amdt 1 25MAY17

TACAN RWY 24

NE-3, 03 DEC 2020 to 31 DEC 2020

NE-3, 03 DEC 2020 to 31 DEC 2020