

TACAN RWY 2

BRV VORTAC 114.5 Chan 92	APCH CRS 022°	Rwy Idg TDZE 10 Arpt Elev 11	AL-339 [USN]	QUANTICO MCAF (TURNER FIELD) (KNYG)
* Circling not authorized W of Rwy 2-20.			MISSED APPROACH: Climbing right turn to 2000 direct BRV VORTAC, then via BRV R-244 to MAAGS and hold.	
ATIS ★ 263.15	POTOMAC APP CON 128.525 306.925	QUANTICO TOWER ★ 118.6 360.2	GND CON 121.75 340.2	ASR/PAR

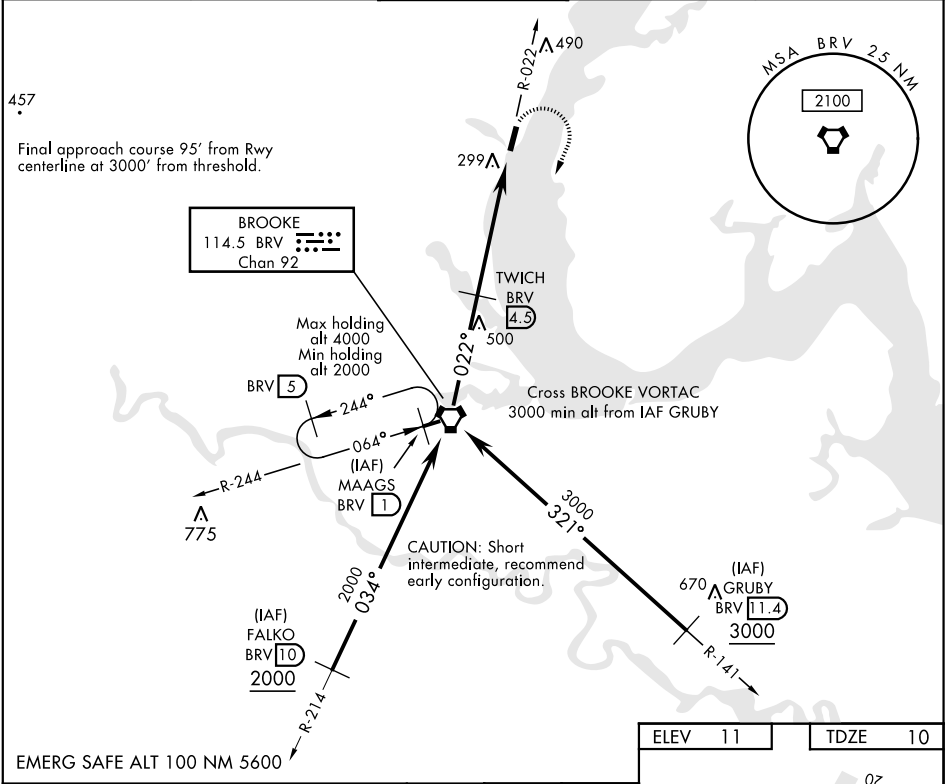


Diagram of the final approach segment for Runway 2-20. The diagram shows the MAAGS R-244 (1) at 2000 feet, the VORTAC at 2000 feet, and the TWICH (4.5) at 1800 feet. The approach is a 022° glide path with a 3.04° TCH 35. The distance from the VORTAC to the TWICH is 4.9 NM. The distance from the TWICH to the runway is 0.5 NM. The diagram also shows the MAAGS R-244 (1) at 2000 feet and the BRV (1) at 2000 feet.

CATEGORY	A	B	C	D
S-2	560-1	550 (600-1)	560-1½	550 (600-1½)
CIRCLING *	560-1 549 (600-1)	640-1 629 (700-1)	720-2 709 (800-2)	800-2½ 789 (800-2½)

Diagram of the runway and taxiway layout. The runway is 4250 x 200 feet. The taxiway is 4250 x 200 feet. The diagram shows the TWR, the runway, and the taxiway. The distance from the runway to the taxiway is 0.5 NM. The diagram also shows the MAAGS R-244 (1) at 2000 feet and the BRV (1) at 2000 feet.

HIRL Rwy 2-20
REIL Rwy 2-20

022° 5.4 NM
from FAF

TACAN RWY 2