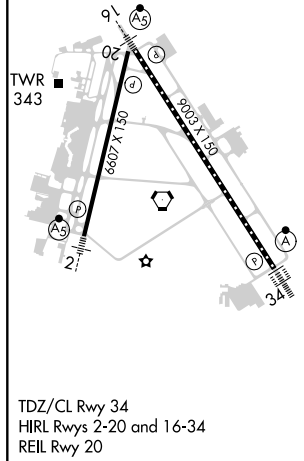
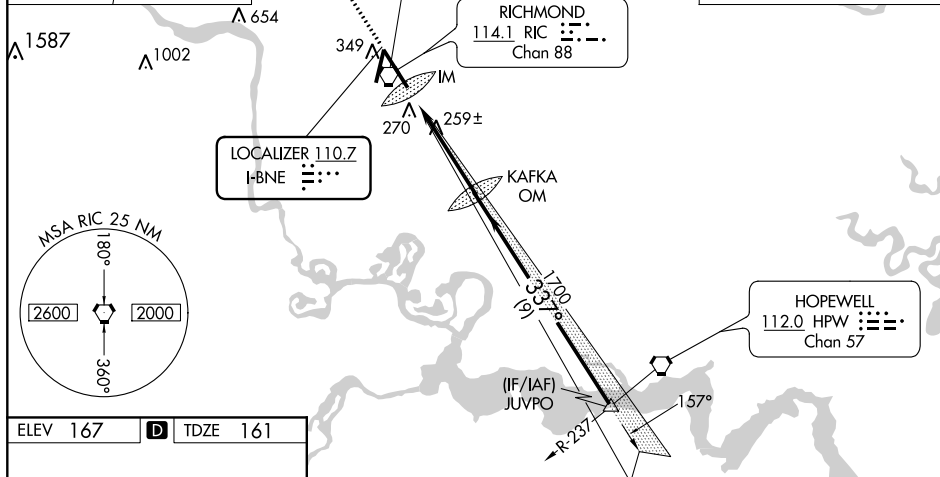
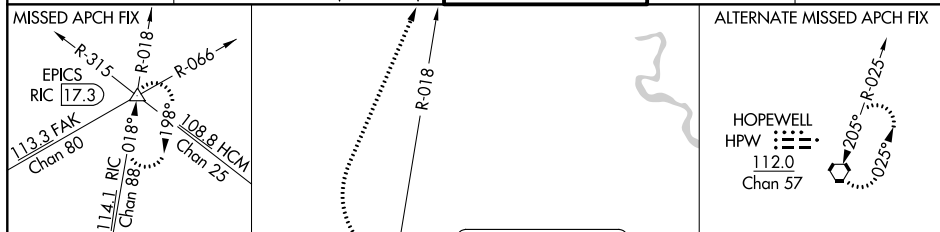


LOC I-BNE <u>110.7</u>	APP CRS 337°	Rwy Idg 9003 TDZE 161 Apt Elev 167
----------------------------------	------------------------	---

ILS RWY 34 (CAT II & III)
RICHMOND INTL (RIC)

<p>T CAT II: RVR 1000 authorized with specific OPSPEC, MSPEC, or LOA approval and use of Autoland or HUD to touchdown.</p>	<p>ALSF-2</p> 	<p>MISSED APPROACH: Climb to 800 then climbing right turn to 2000 via RIC VORTAC R-018 to EPICS INT/RIC 17.3 DME and hold.</p>
---	---	--

ATIS		POTOMAC APP CON		RICHMOND TOWER		GND CON		CLNC DEL	
119.15	263.025	126.4	282.375 (001°-185°)	121.1	257.8	121.9	348.6	127.55	348.6
		126.75	307.2 (186°-360°)						



CATEGORY II & III ILS-SPECIAL AIRCREW & AIRCRAFT CERTIFICATION REQUIRED